

**Port Authority  
International Docks**

**Harbor West**

**Erie Street  
Festival Pier**

**Burke Lakefront Airport**

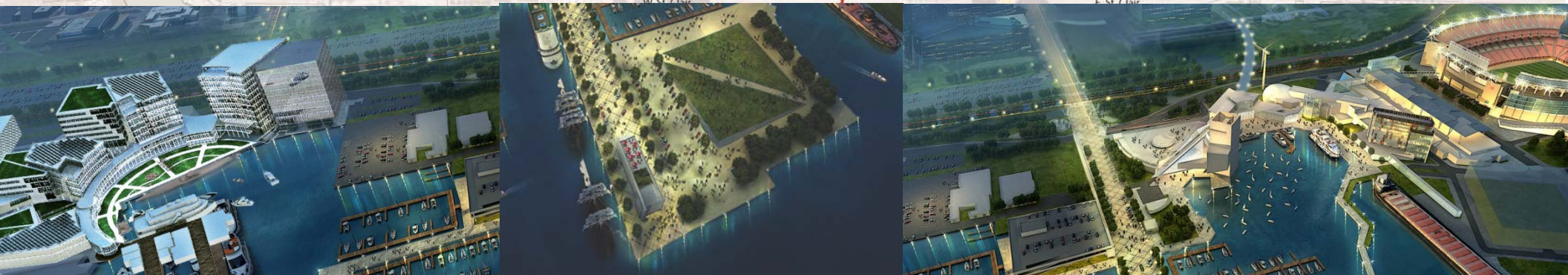
**North  
Coast  
Harbor**

**Downtown  
Lakefront  
Concourse**

**Burke Development District**

**The Mall**

# Plan for Cleveland's Downtown Lakefront



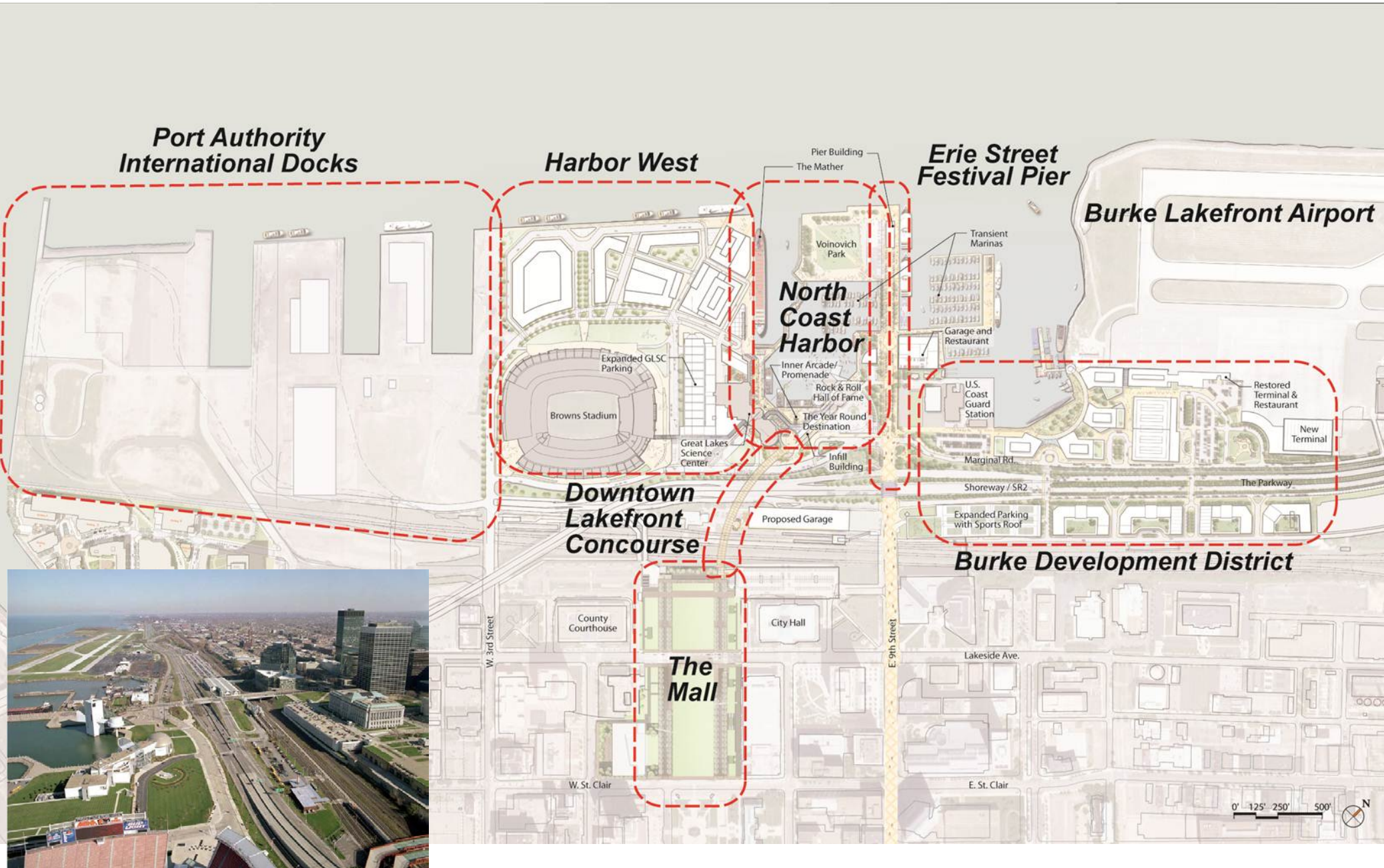


# Illustrative Plan: Mixed Use Districts



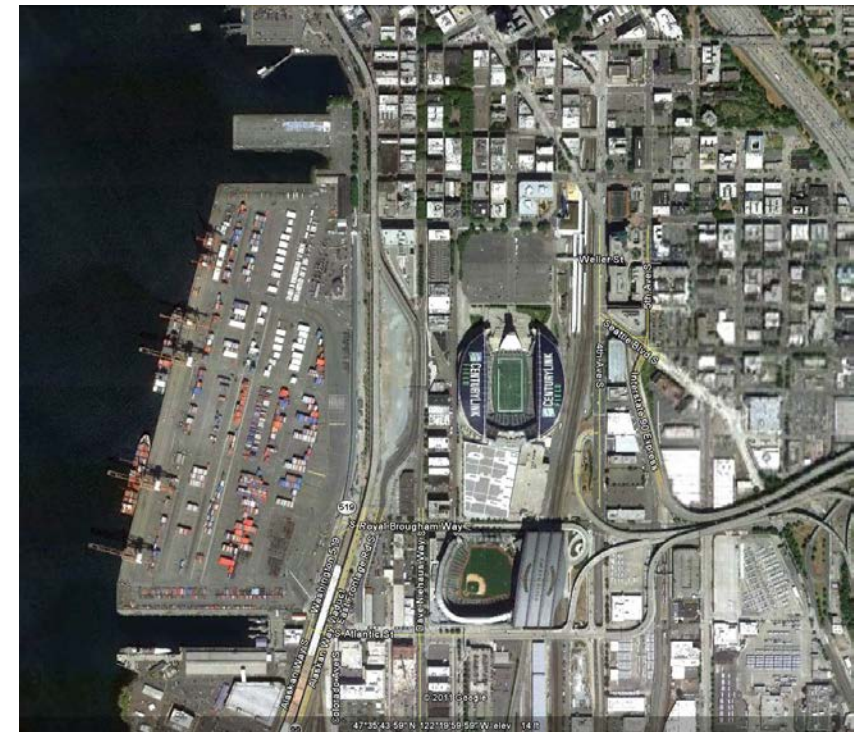


# Consolidated Plan





# Urban With Freight





- 1 - An Urban Fabric (Walkable, Dense & Mixed Use)**
- 2 - For All Seasons**
- 3 - Focused on a Water Plan**
- 4 - Learning from Cleveland Precedents**
- 5 - Based on Incremental Development**



# Districts



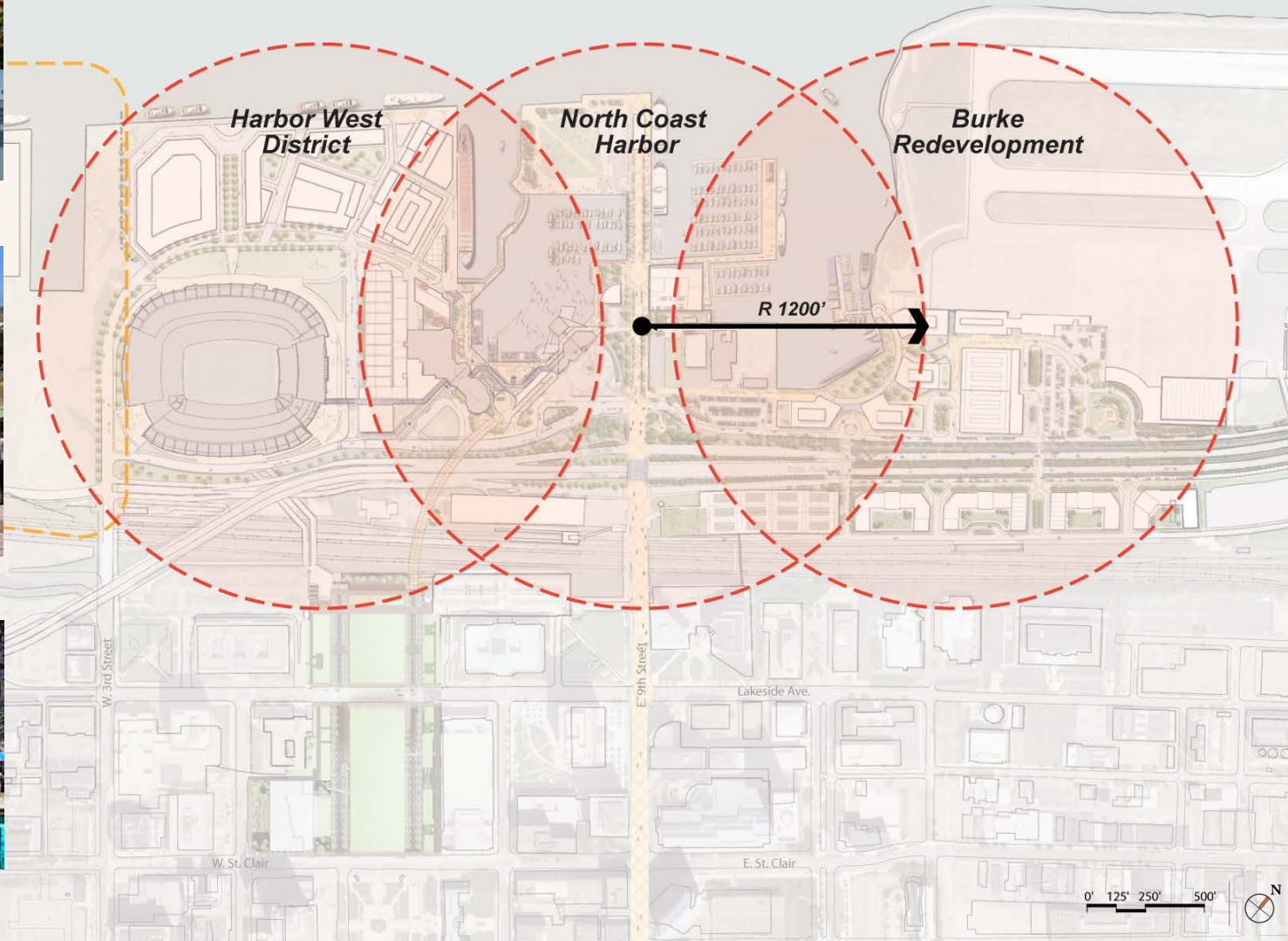
Wharf



Erie Street Pier

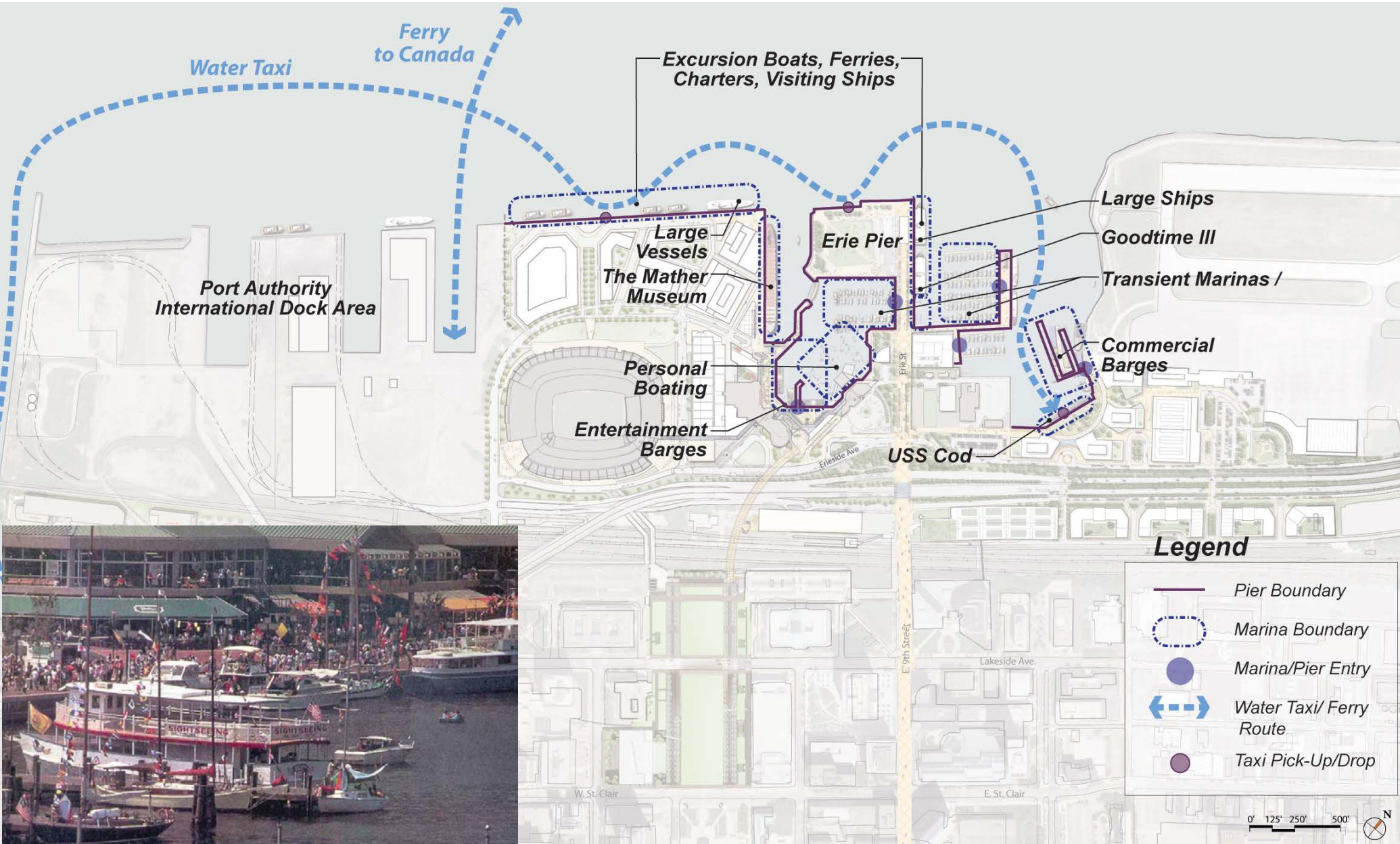


Office Park



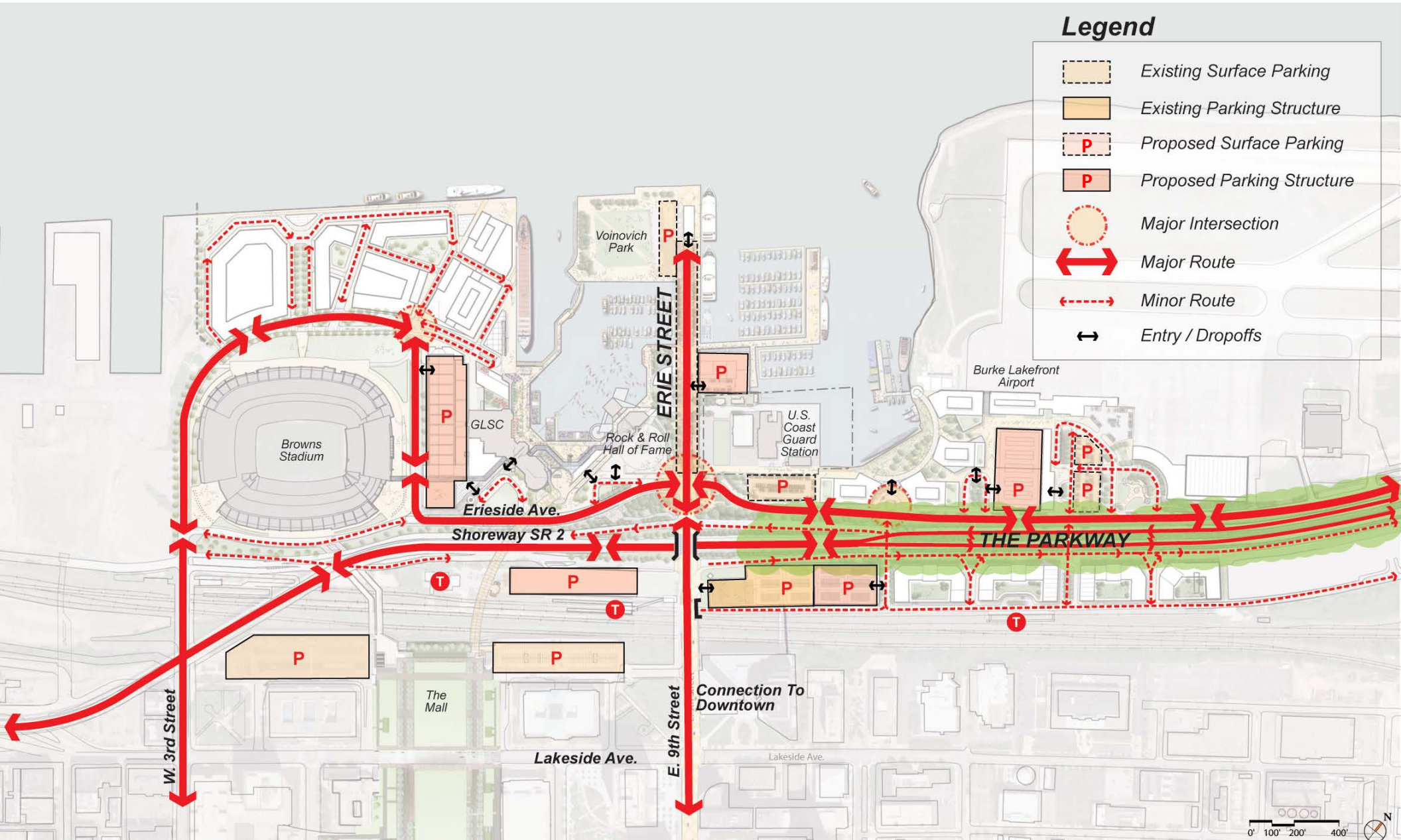


# Water Plan



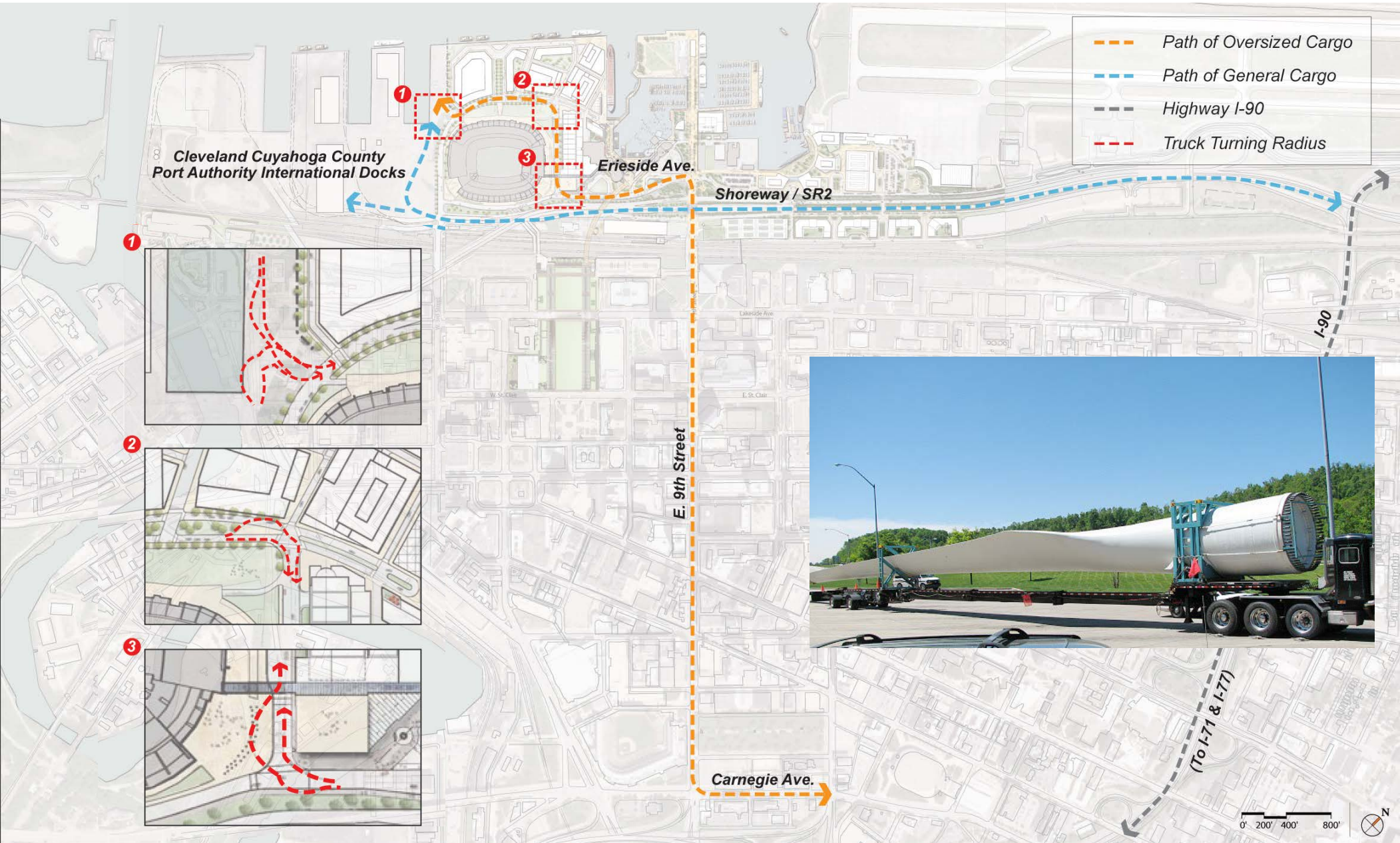


# General Vehicular Circulation Plan



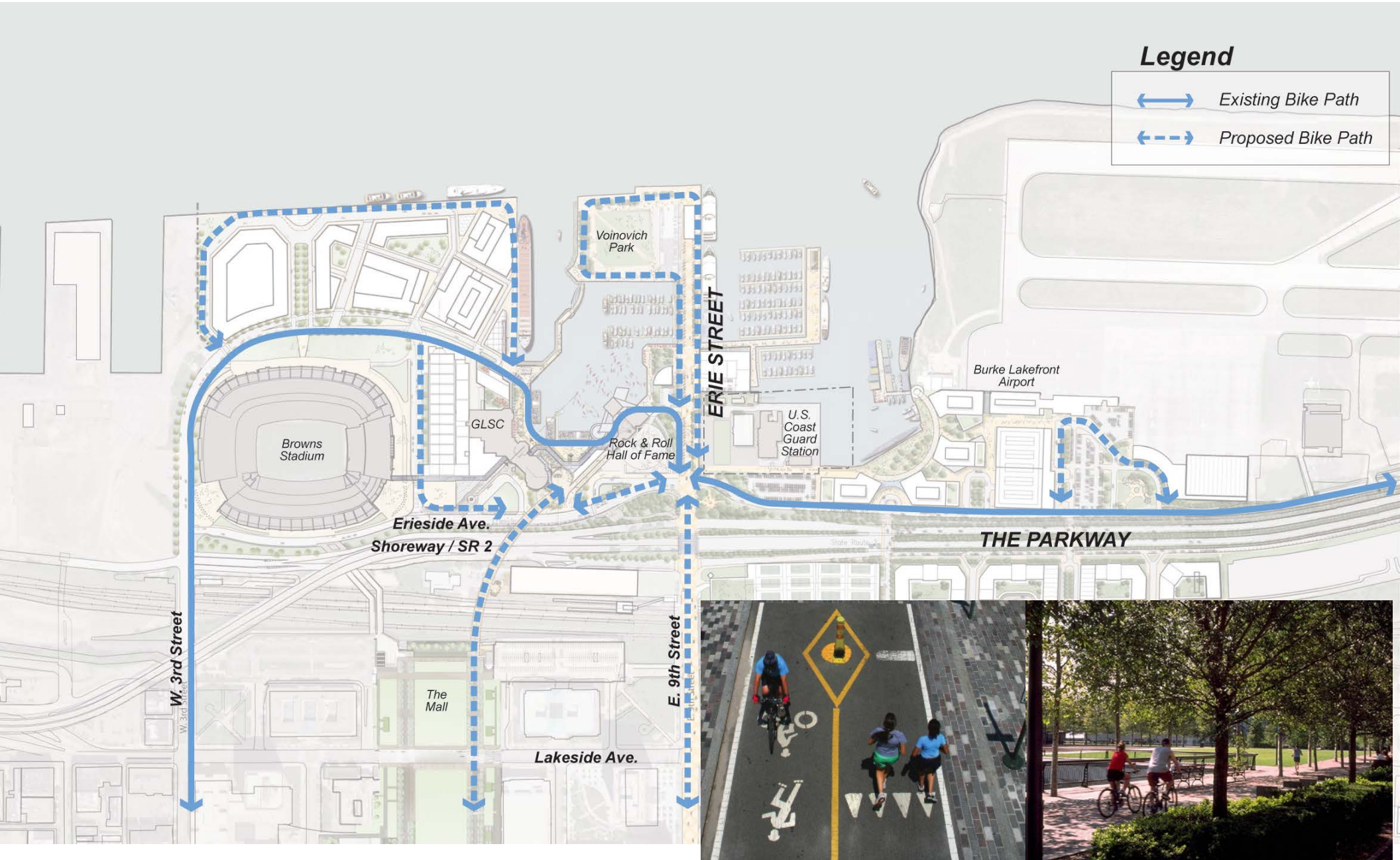


# Port Authority International Docks: Truck Access



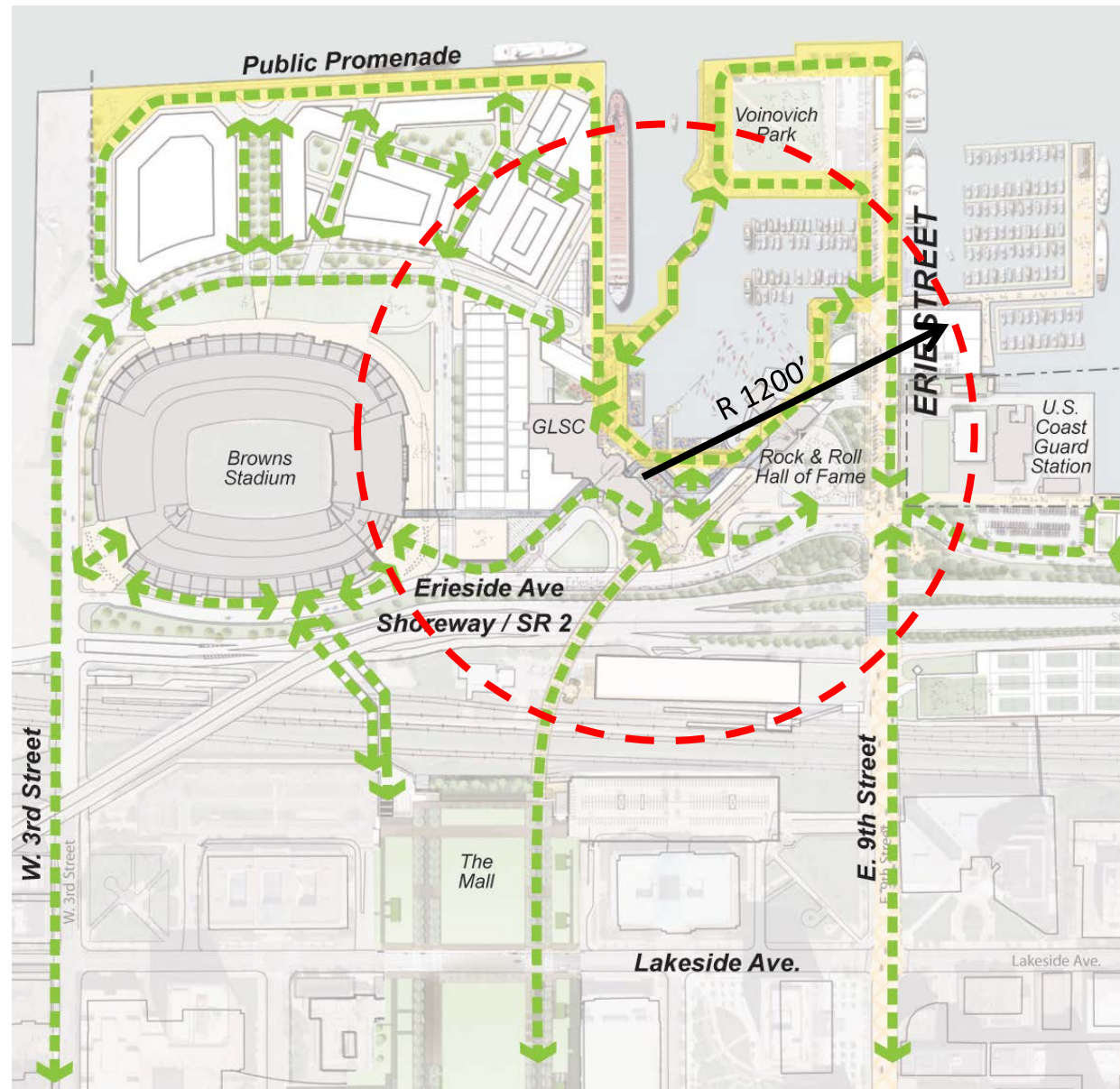


# Bicycle Circulation Plan



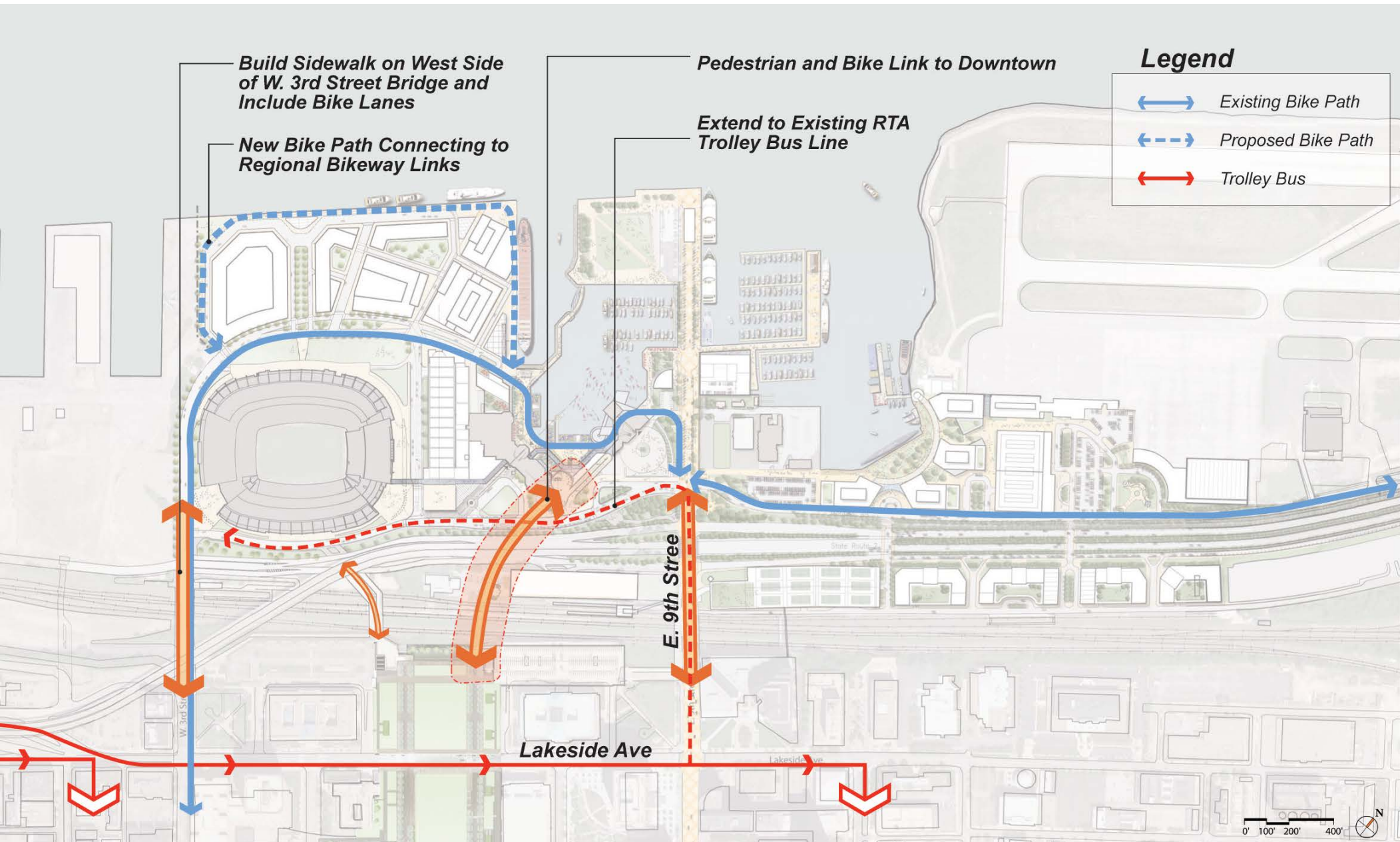


# Pedestrian Circulation Plan



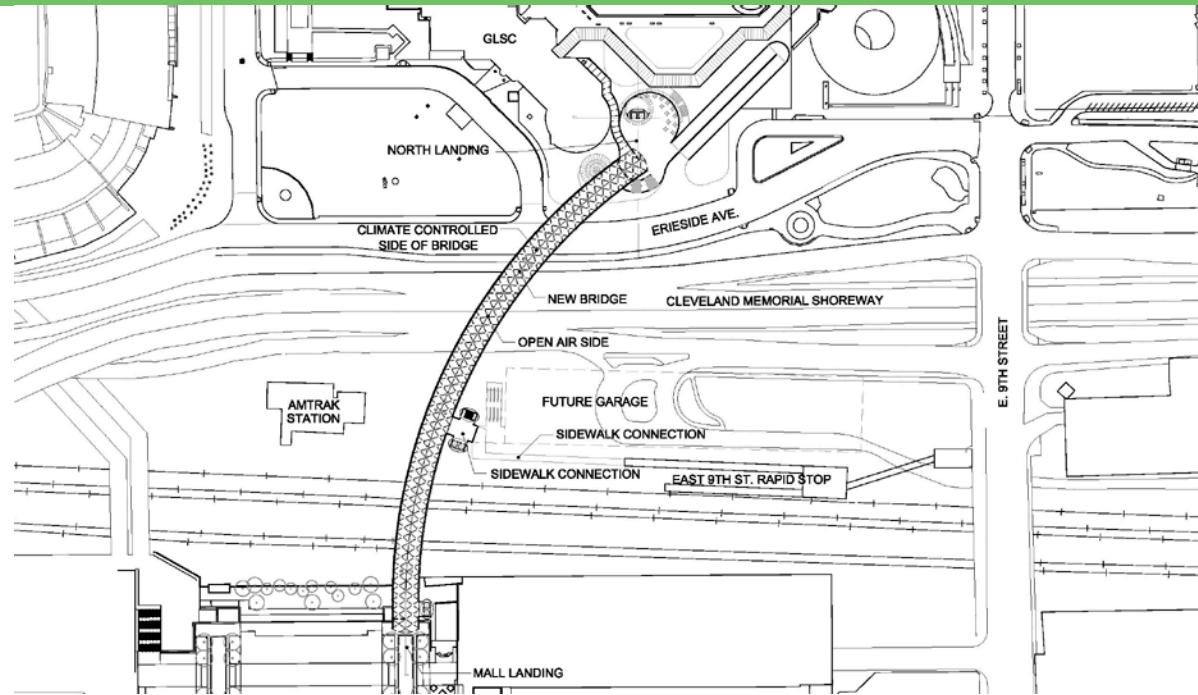
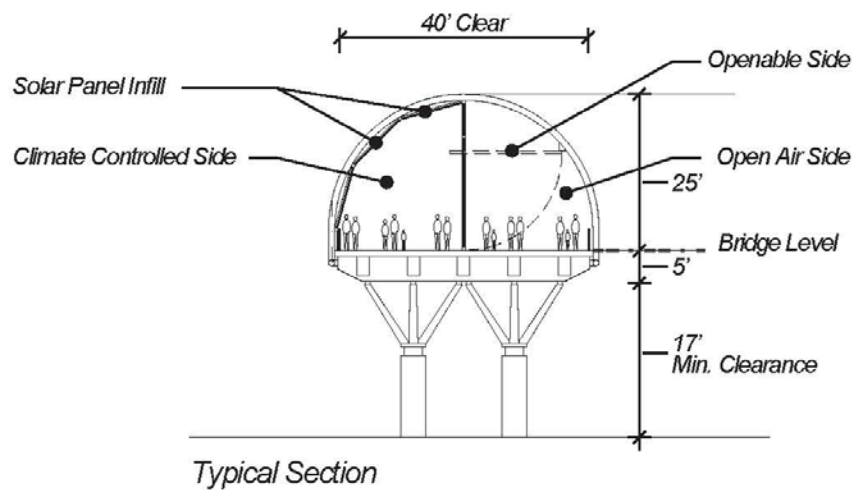


# Upland Connections



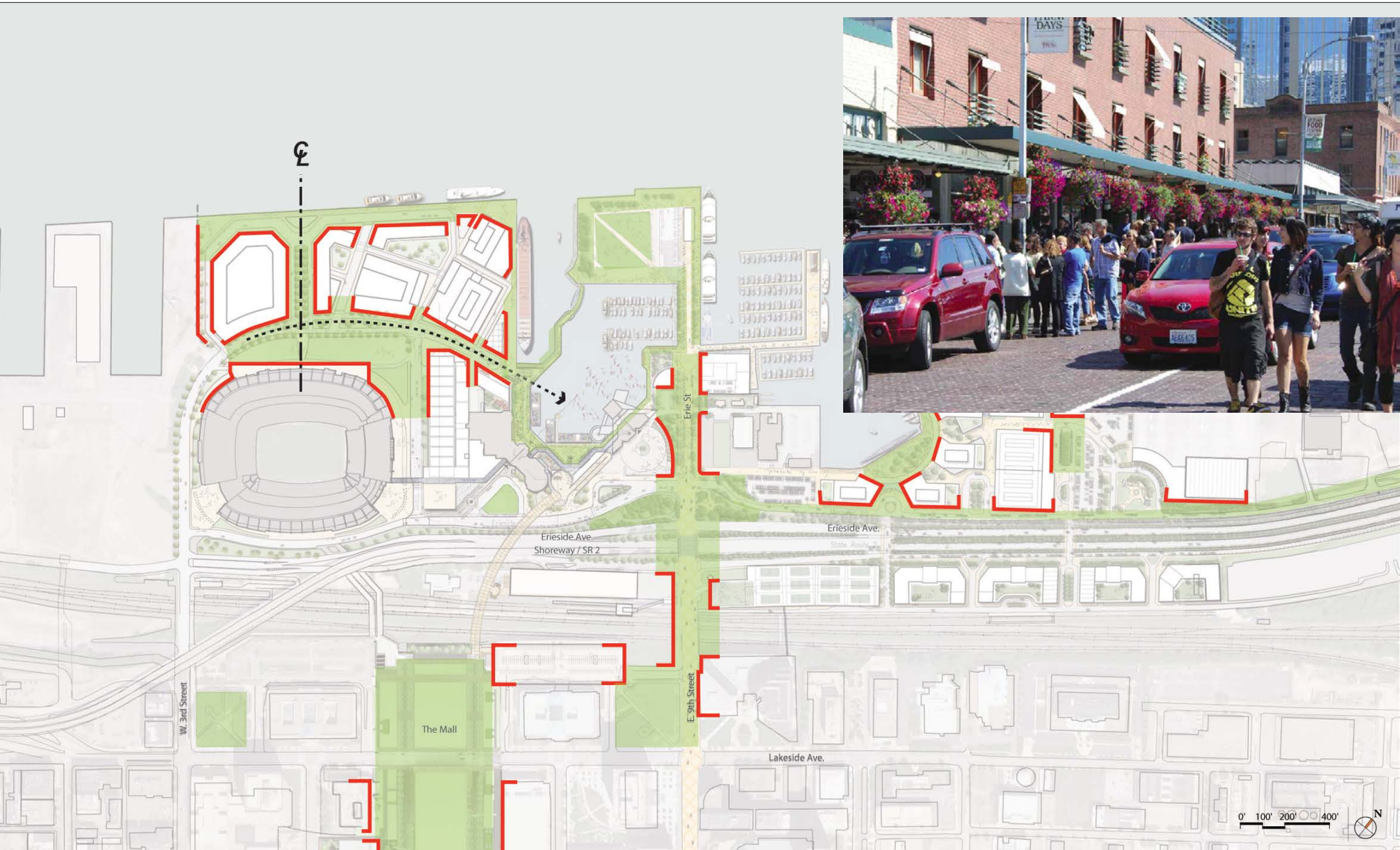


# New Pedestrian Concourse





# Public Open Space



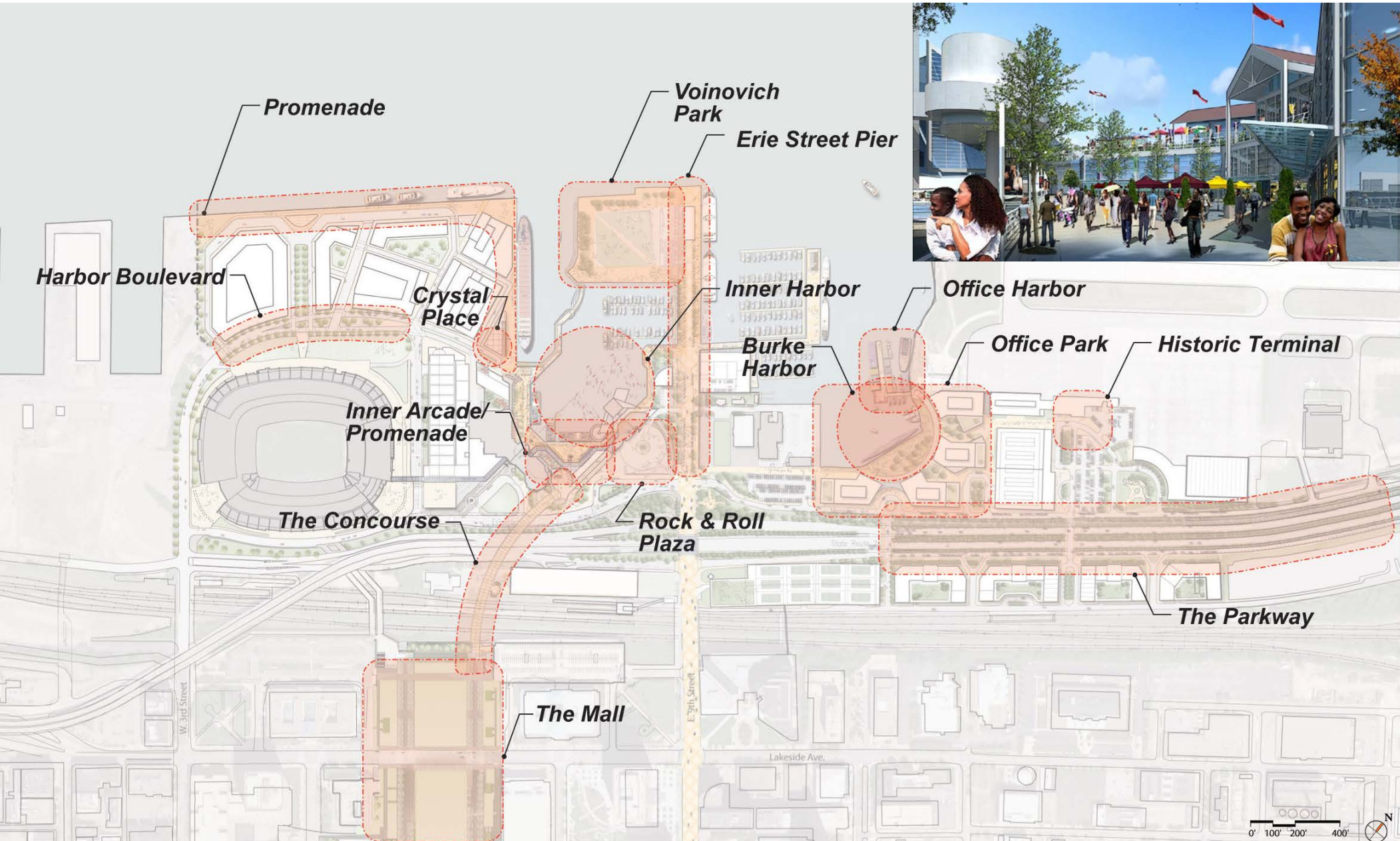


# Arcade – Melbourne Harbor



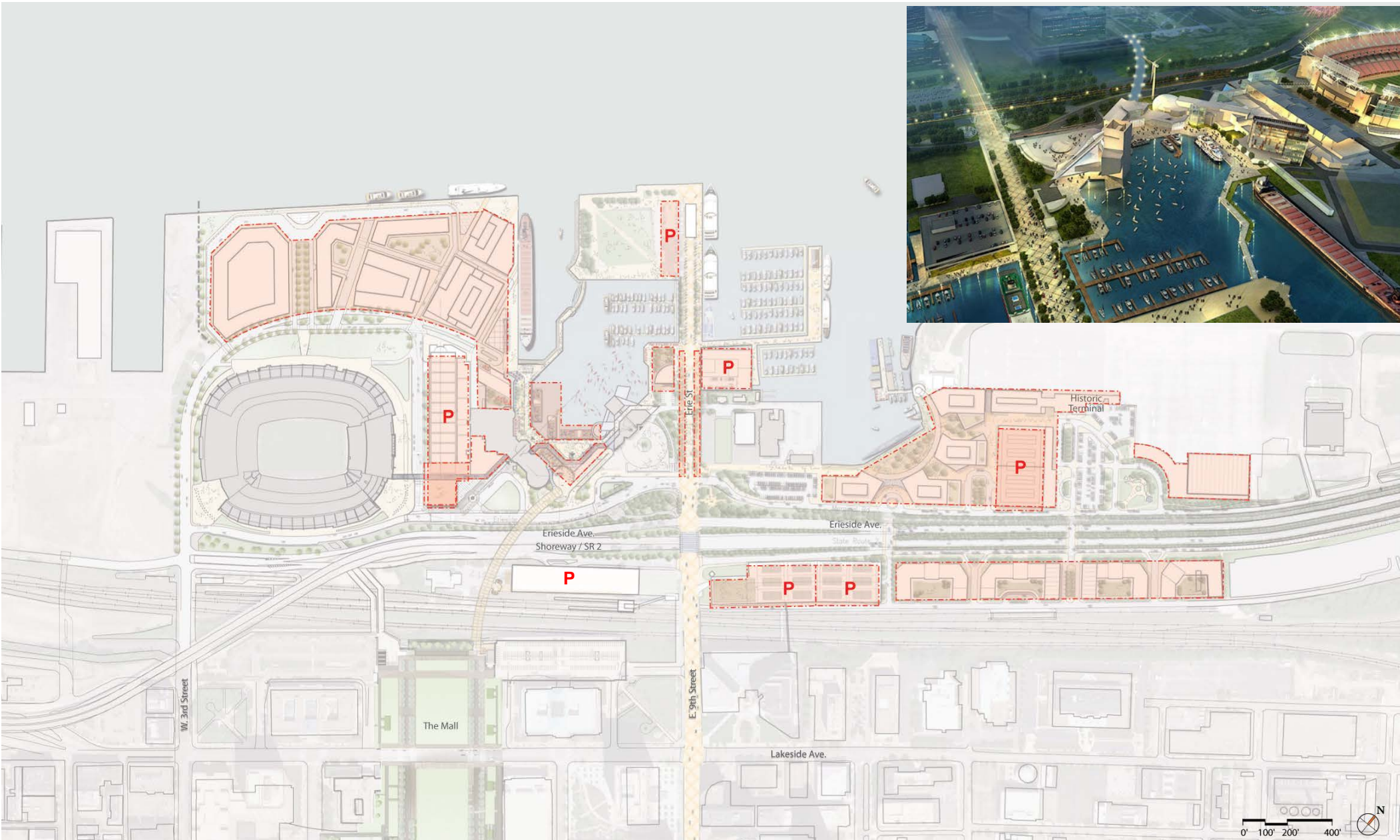


# Public Places





# Private Development





# North Coast Harbor

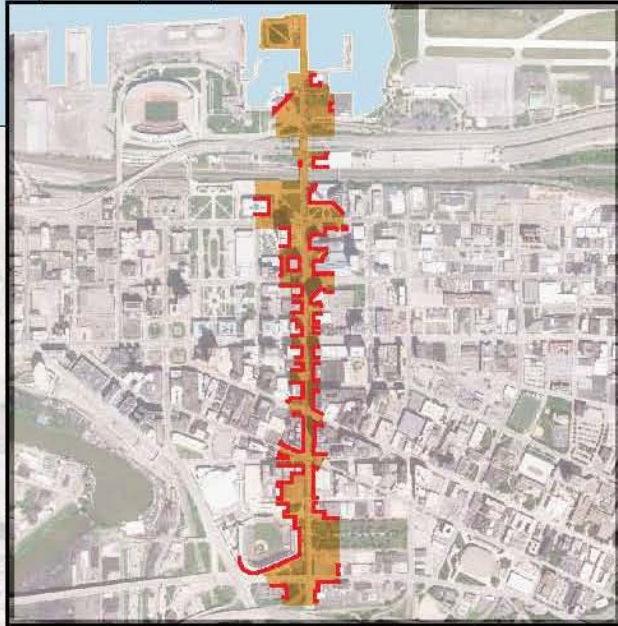


# North Coast Harbor

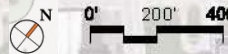




# Connecting to Cleveland's Downtown

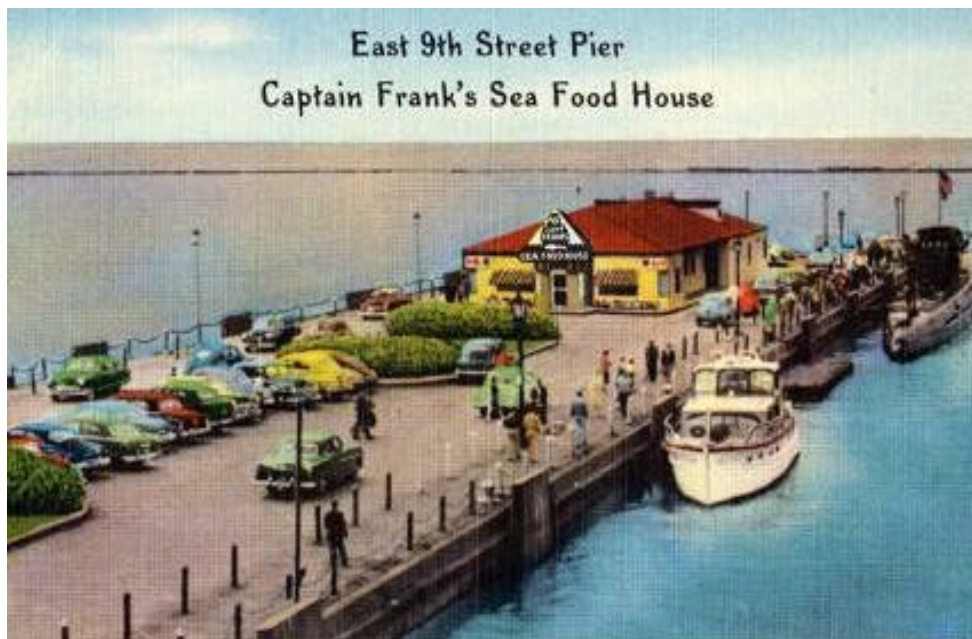


- *Historic Erie Street As Center of Downtown*
- *Major Connection to Waterfront*
- *Potential for New Development Sites*



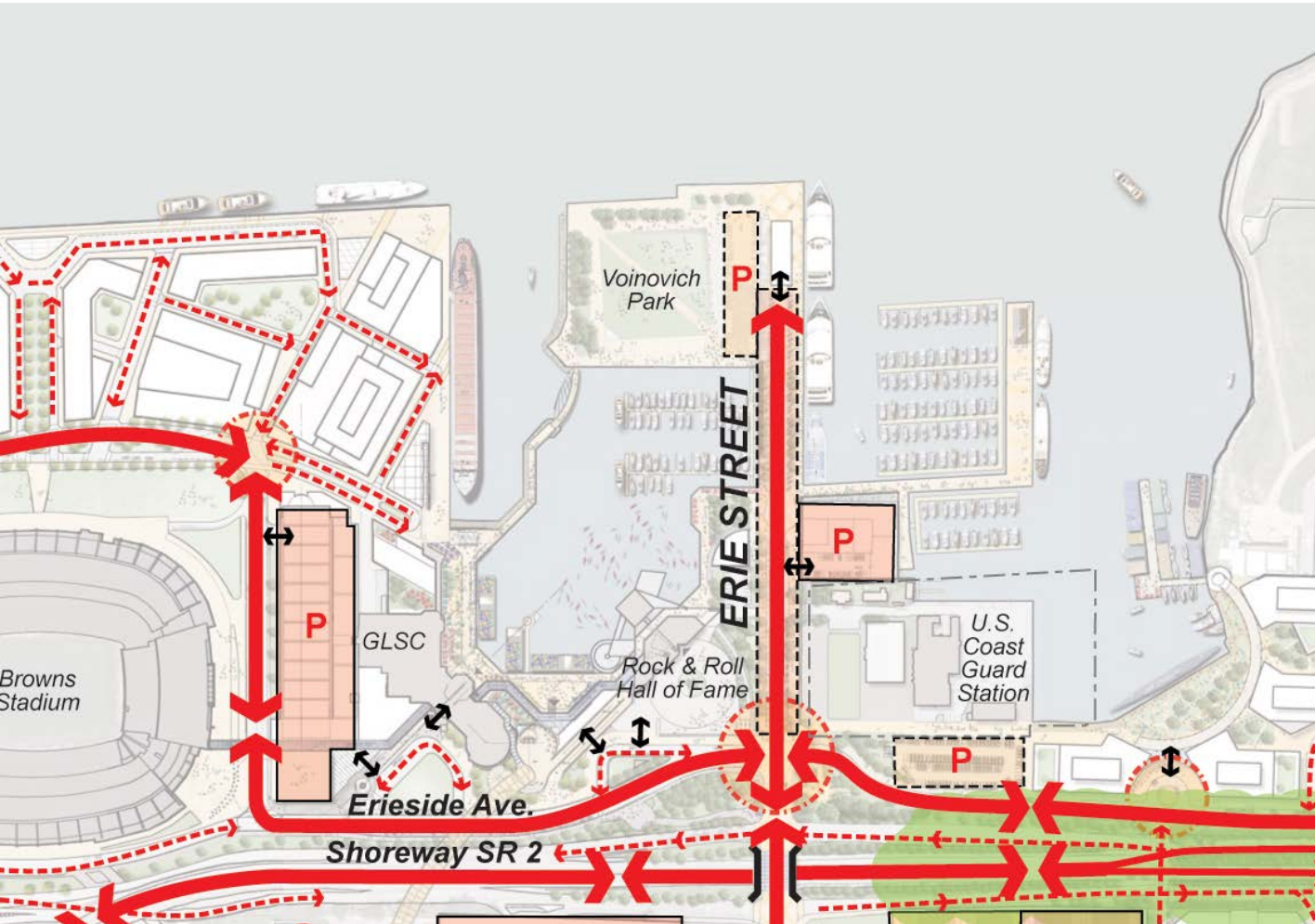


# Historic Images of East 9<sup>th</sup> Street Pier



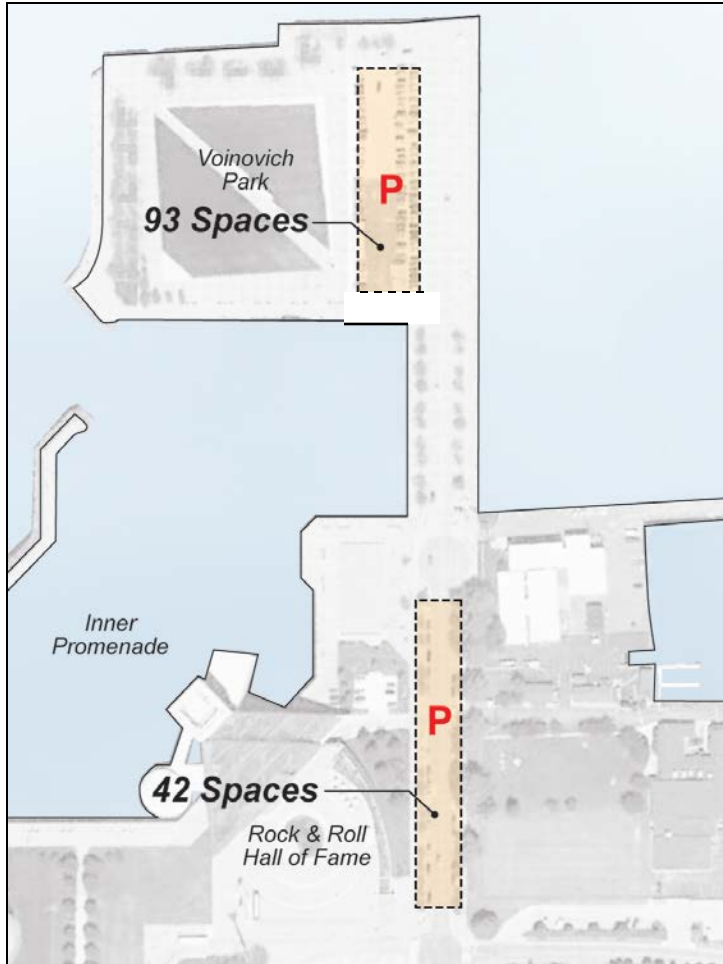


# Convenient Vehicular Access & Parking

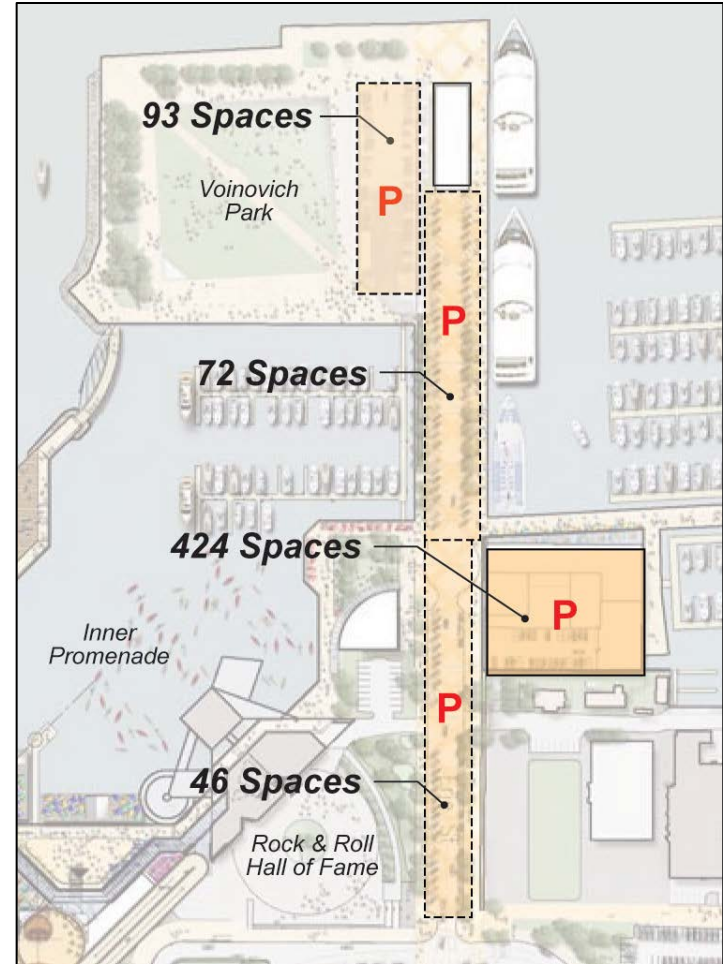




# Erie Street Pier: Parking Comparison



VS



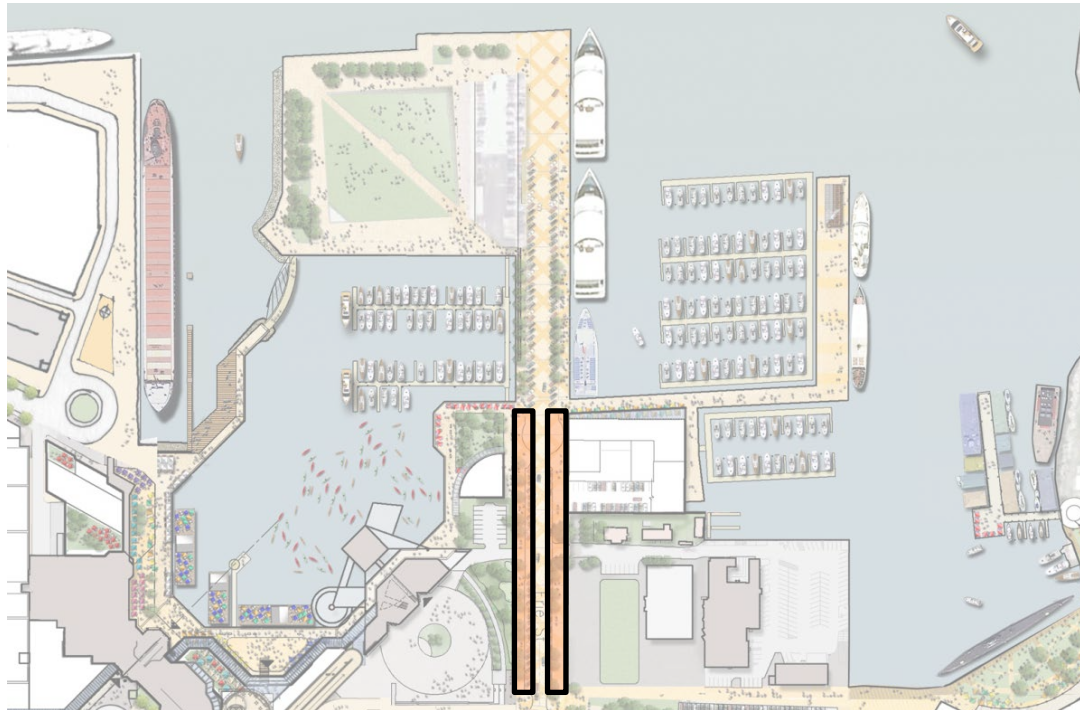


# New Festival Pier



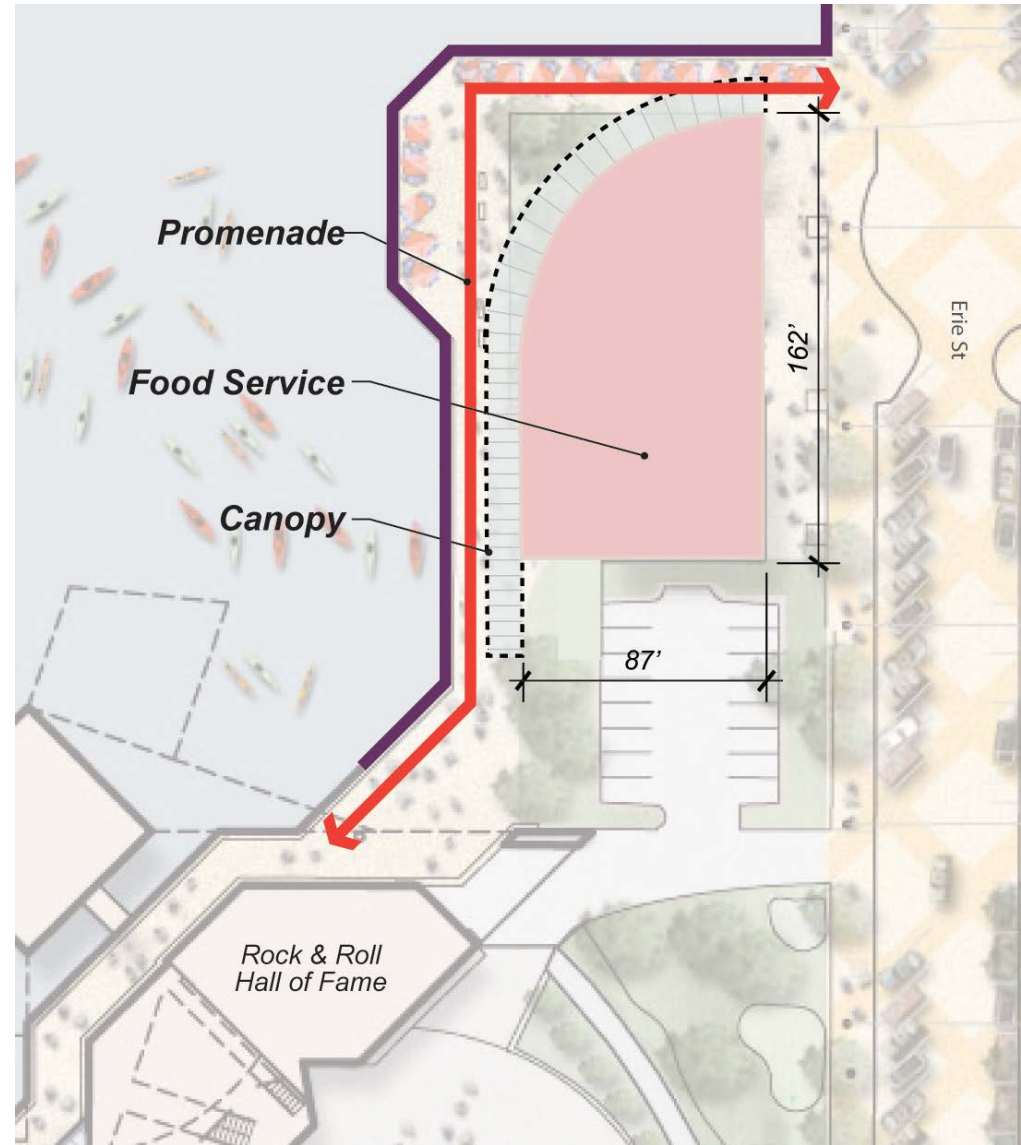


# Interim Seasonal Site: Erie Pier as a Food Street





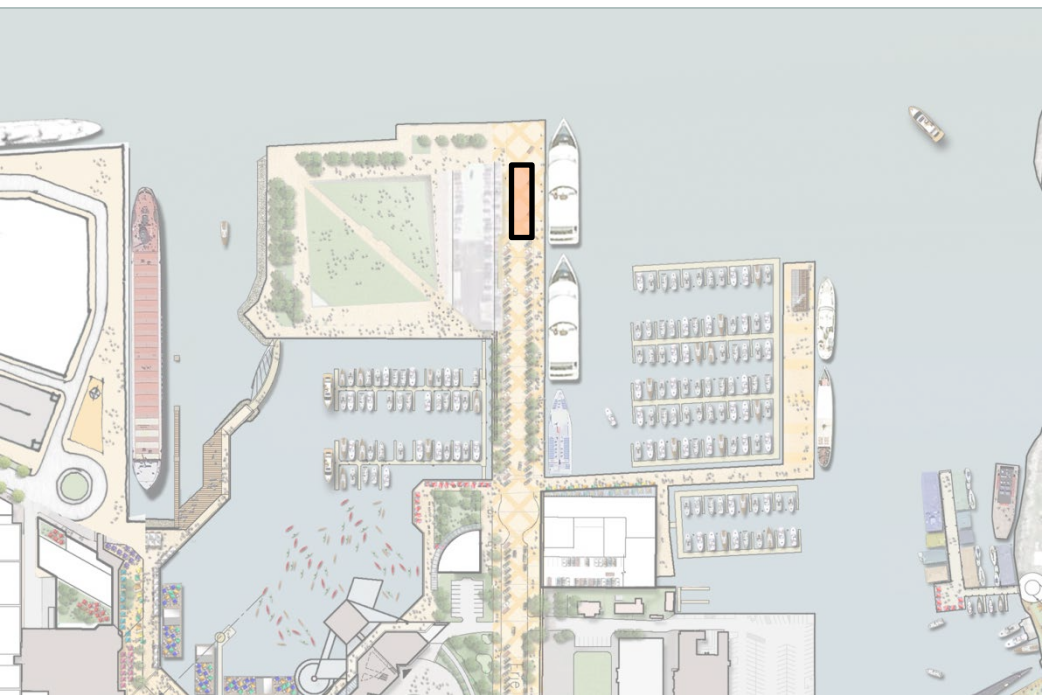
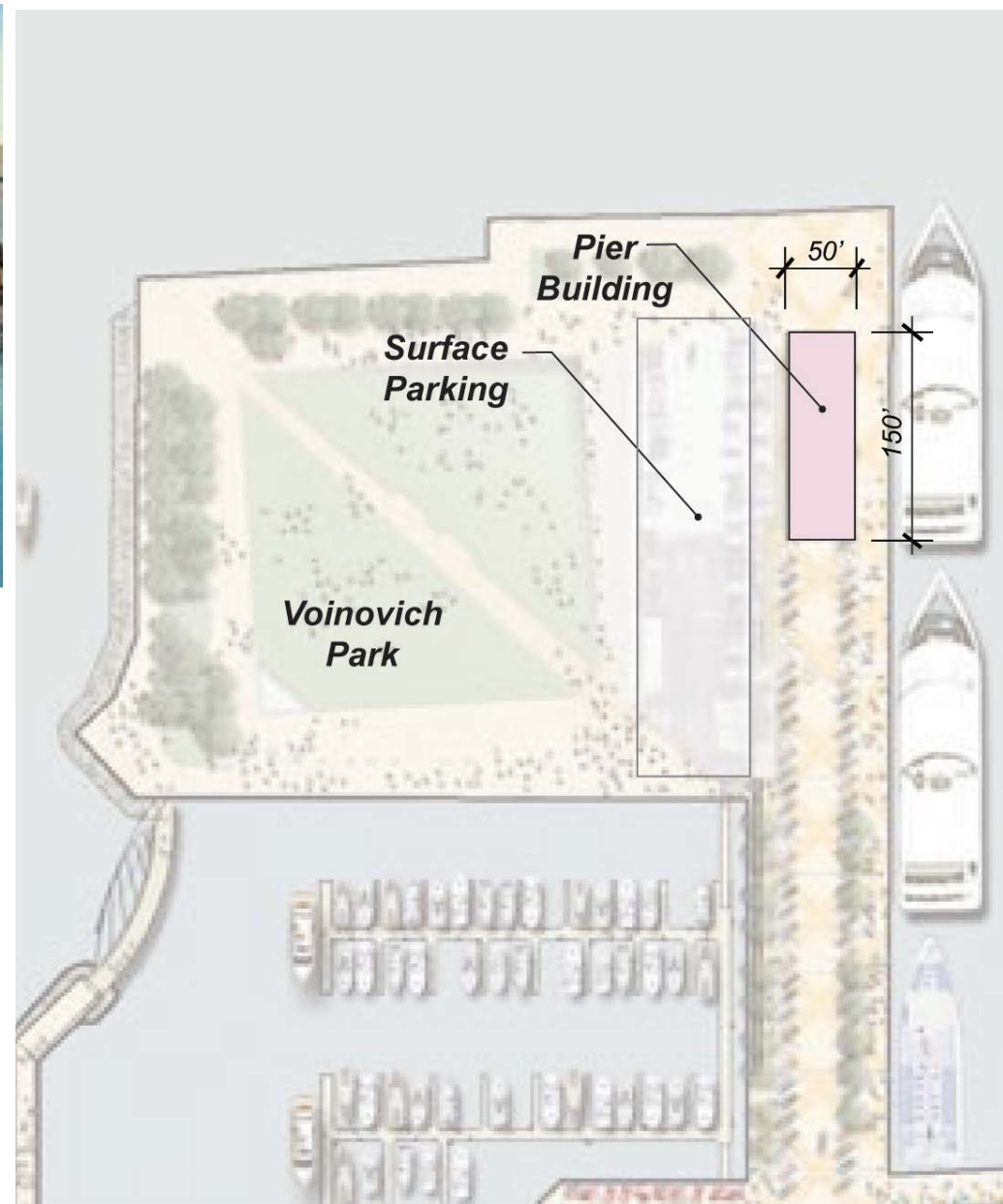
# Restaurant Site





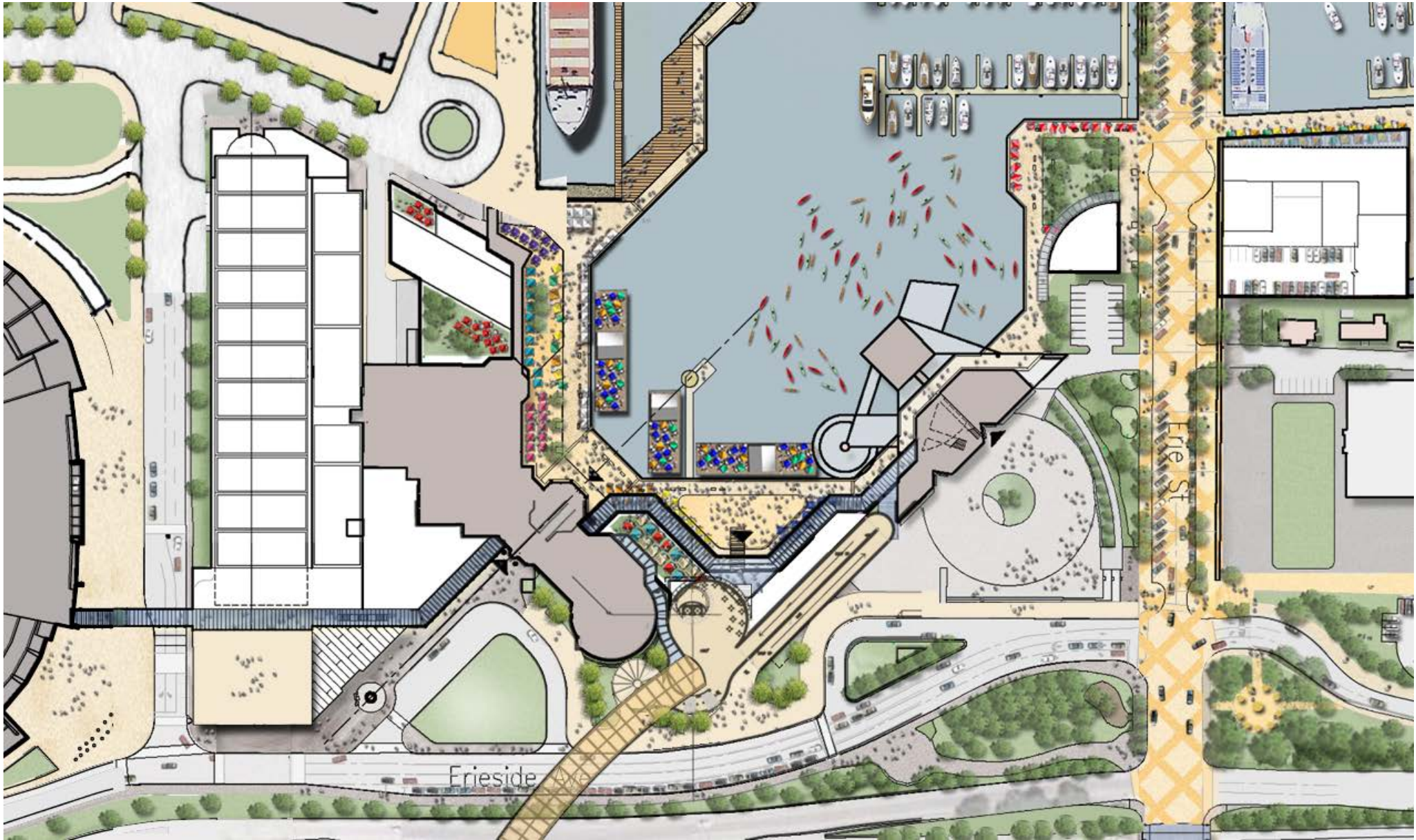
# Pier Building: Destination at End of Pier

East 9th Street Pier  
Captain Frank's Sea Food House



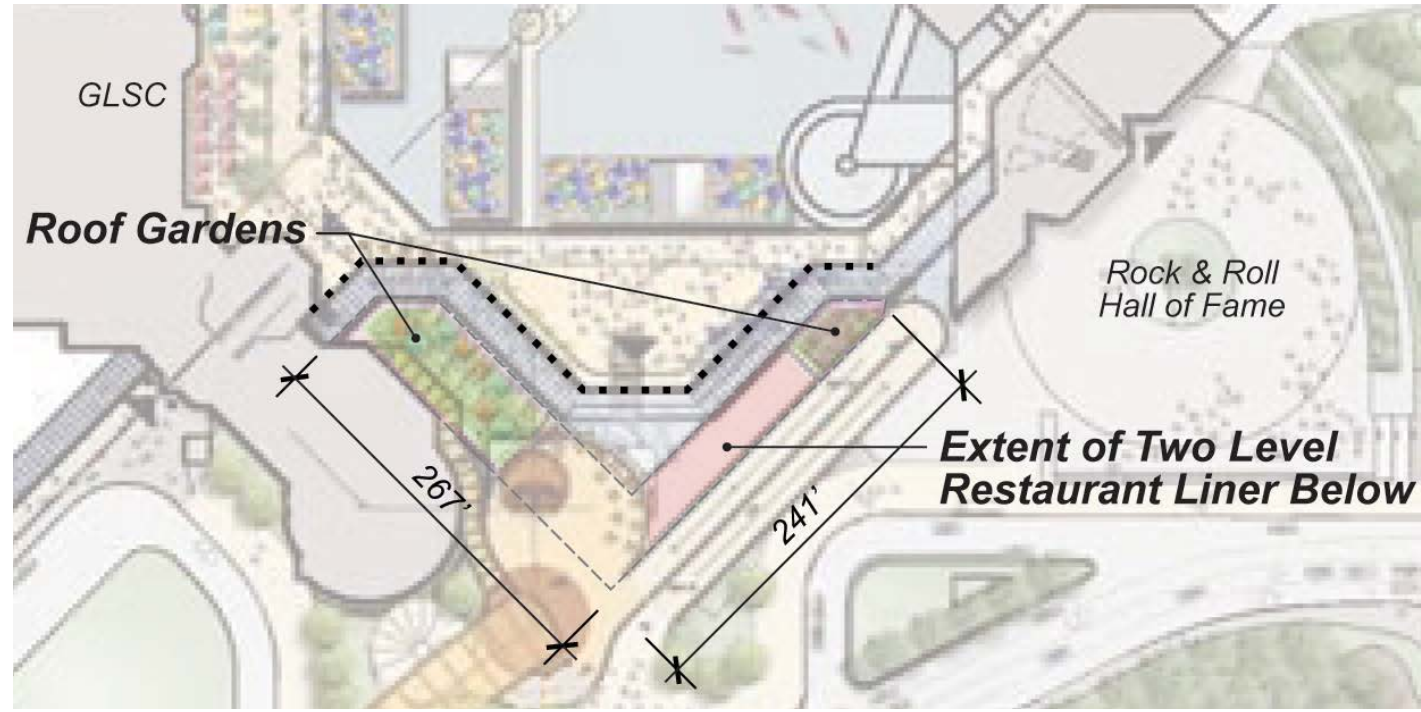


# Harbor West District Development and West Block



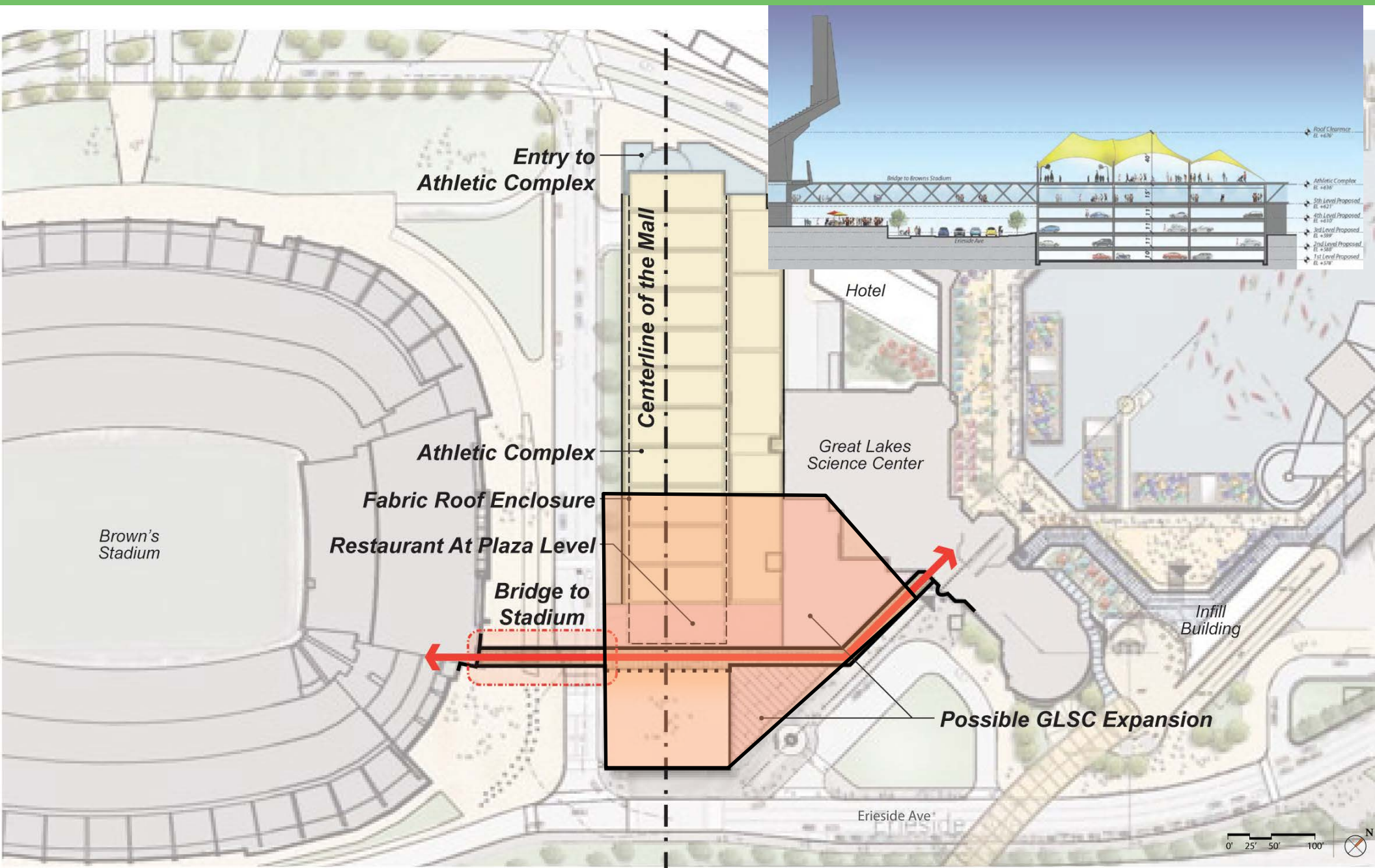


# Infill Building



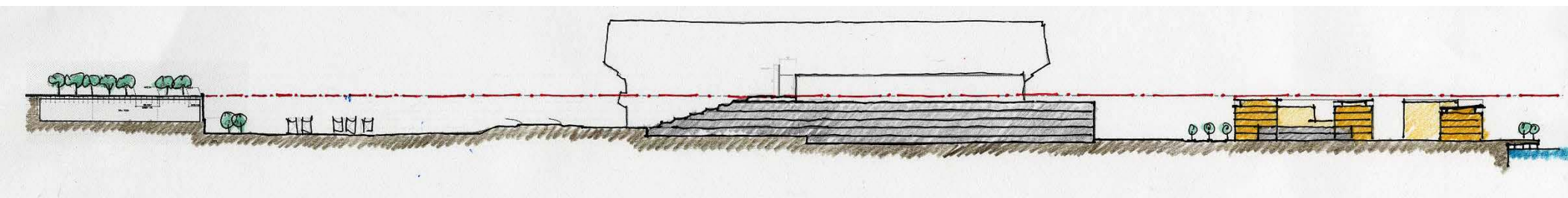
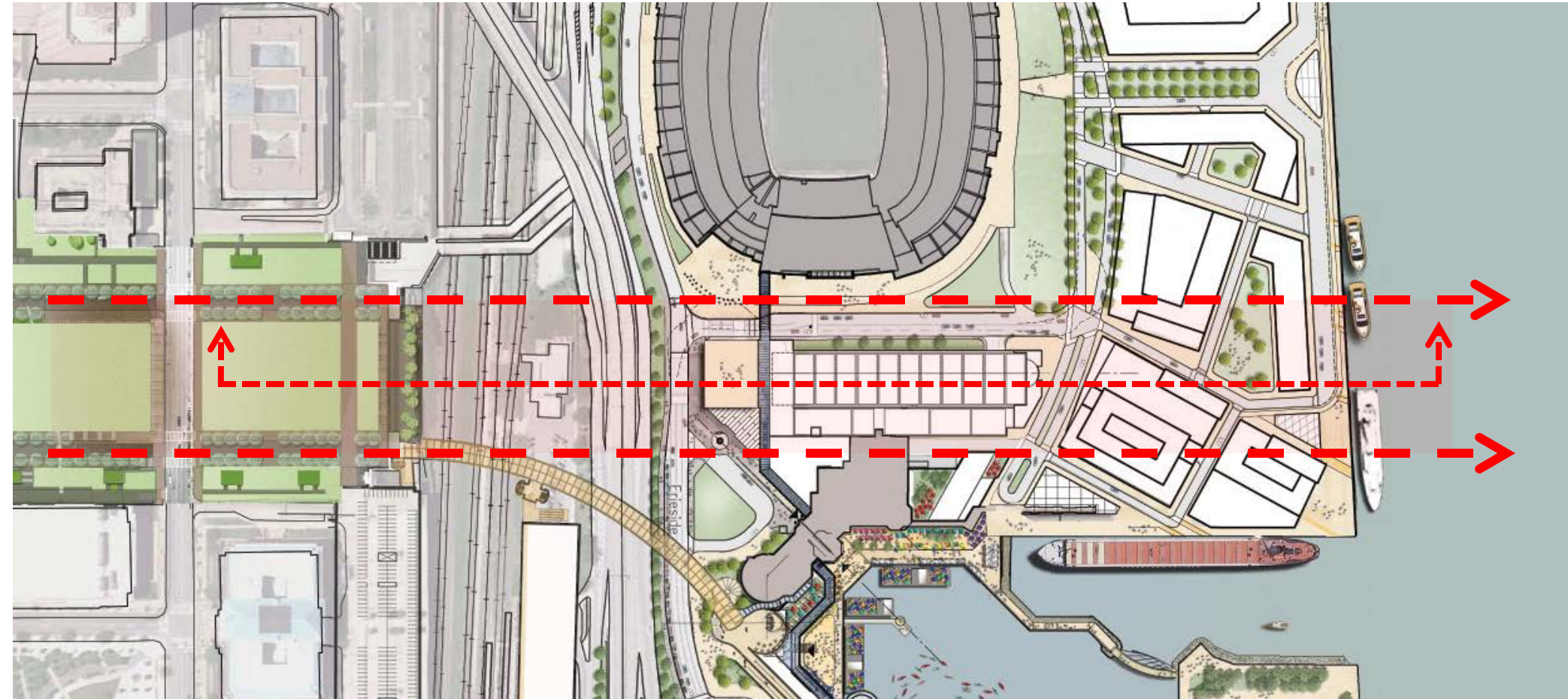


# New Development Site





# View Corridor





# North Coast Harbor

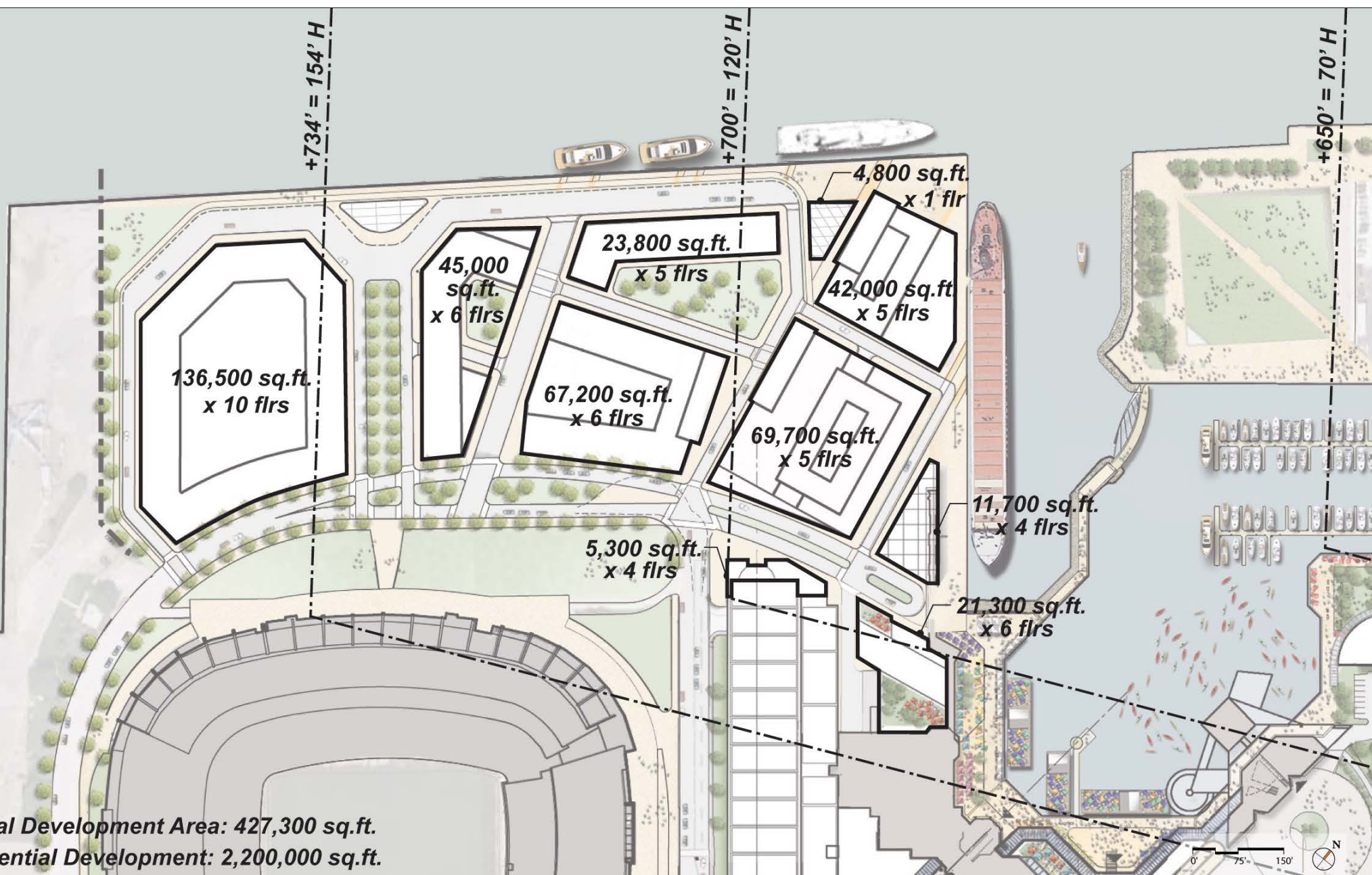




# Harbor West



# Harbor West District: Development Sites





# Winter Scenes





# Harbor West District





# Harbor West District

## 5. Cleveland's Green Tradition: "Pockets"

### "Pockets" as places

- Cleveland has a pattern of small commercial pocket squares and parks.
- Chagrin Falls, East 4<sup>th</sup> Street, Little Italy, Shaker Square, Ohio City, Tremont, West Side Market, West 25<sup>th</sup> Street, and Old Detroit in Rocky River are a few examples.
- They include a variety of offerings.
- Small, human scaled places within a larger context.
- These are all visited by all residents, which is key to their success.
- If the spaces are too big and too spread out, they would be harder to use in winter months.
- Large is not necessary nor desirable.
- As seen in overlays, the size is large enough to accommodate many of these small pockets.



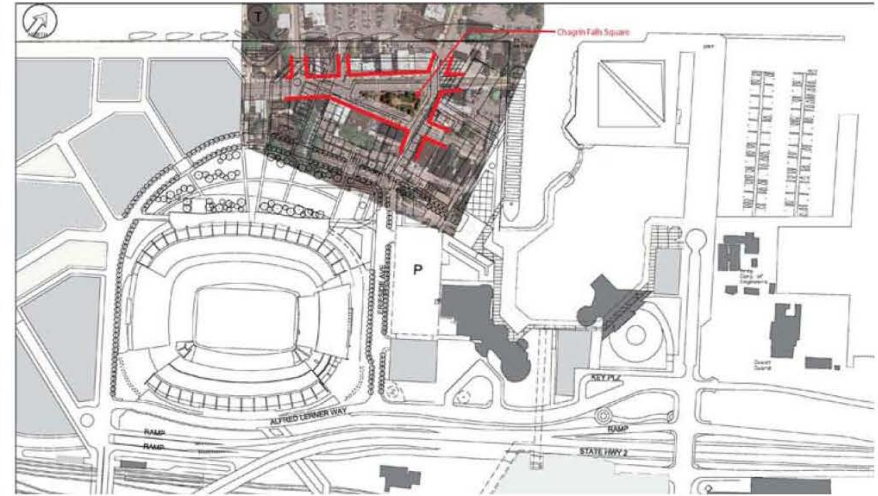
Chagrin Falls



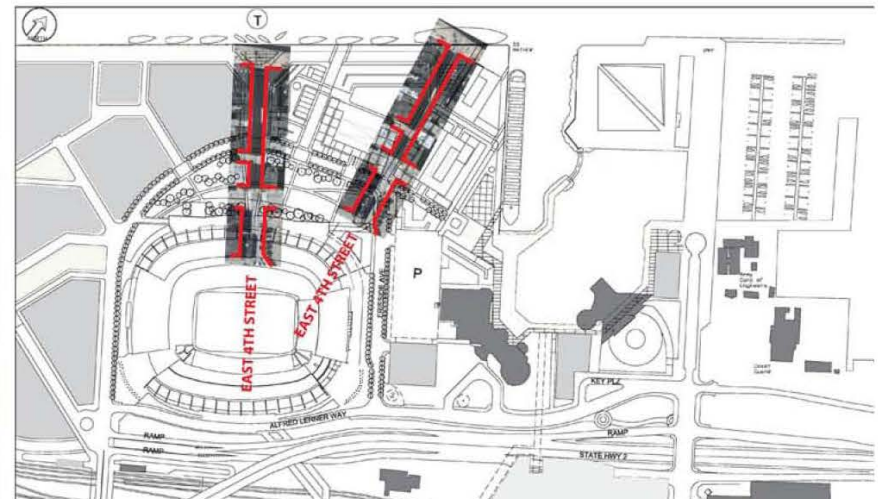
Chagrin Falls



East 4th Street



Chagrin Falls overlay on Site Area



East 4th Street overlay on Site Area

September, 2009



# Harbor West District

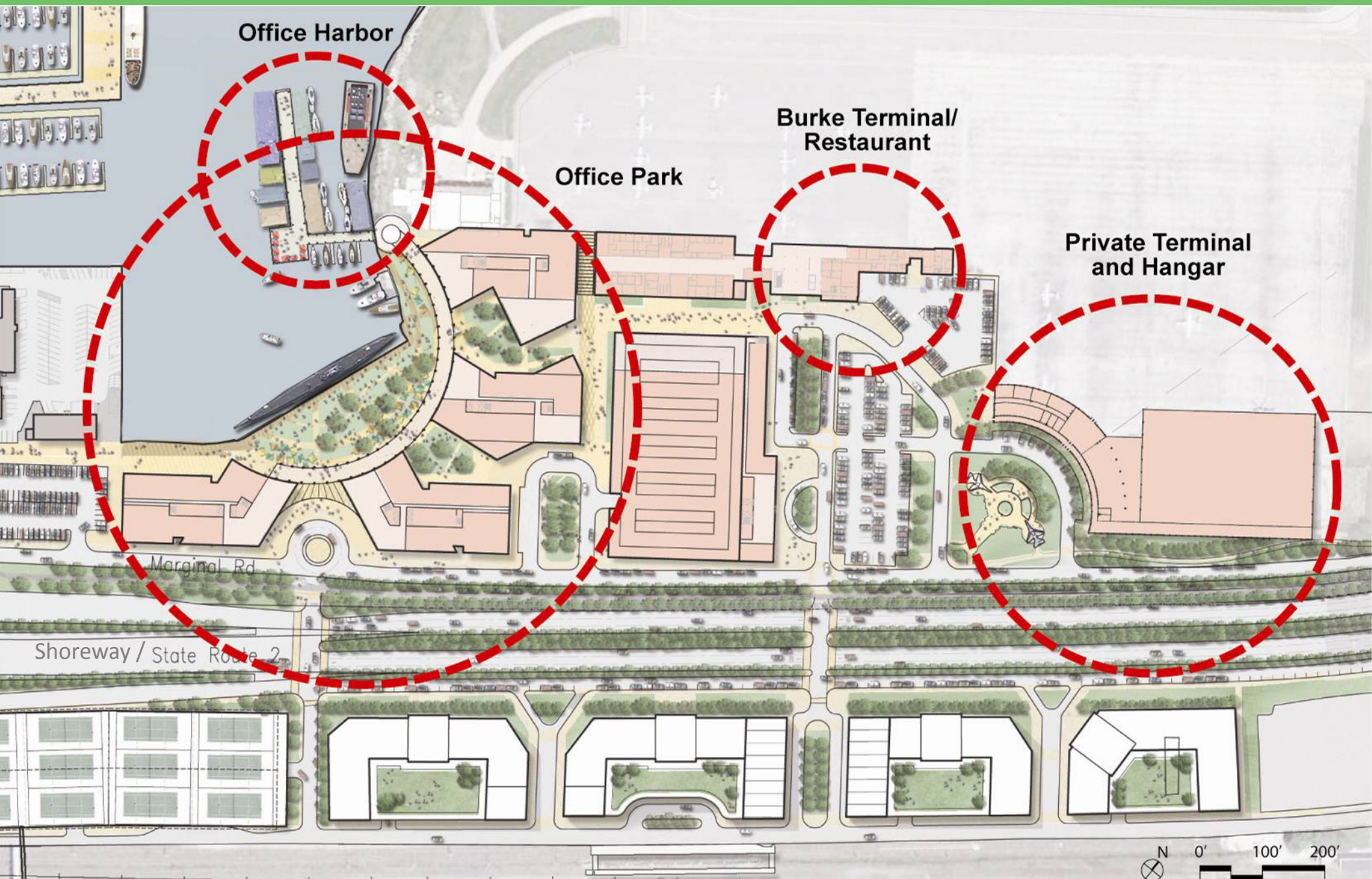




# Burke Development District



# Burke Redevelopment Plan: Ground Level





# Existing Water Edge Conditions at Hornblowers



A



B



C





# Office Harbor

- Create more of a critical mass
- An alternative site for Institutions and Universities
- Potential to link to Terminal in weather controlled environment
- Stay as is for 2-3 years



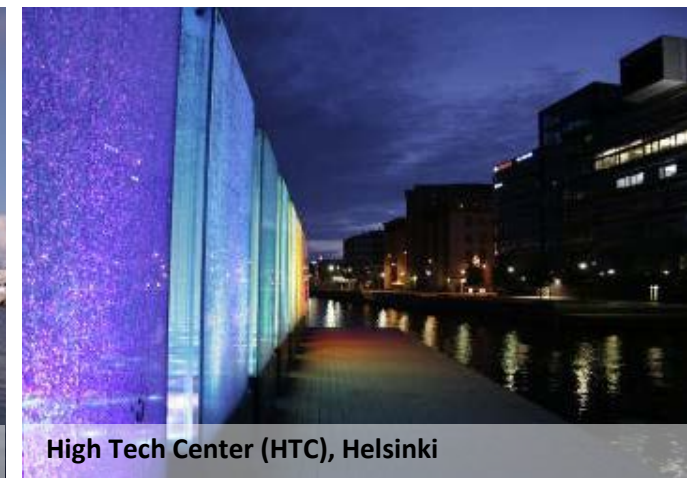
Docklands Floating Office, London



Floating Office, Vancouver



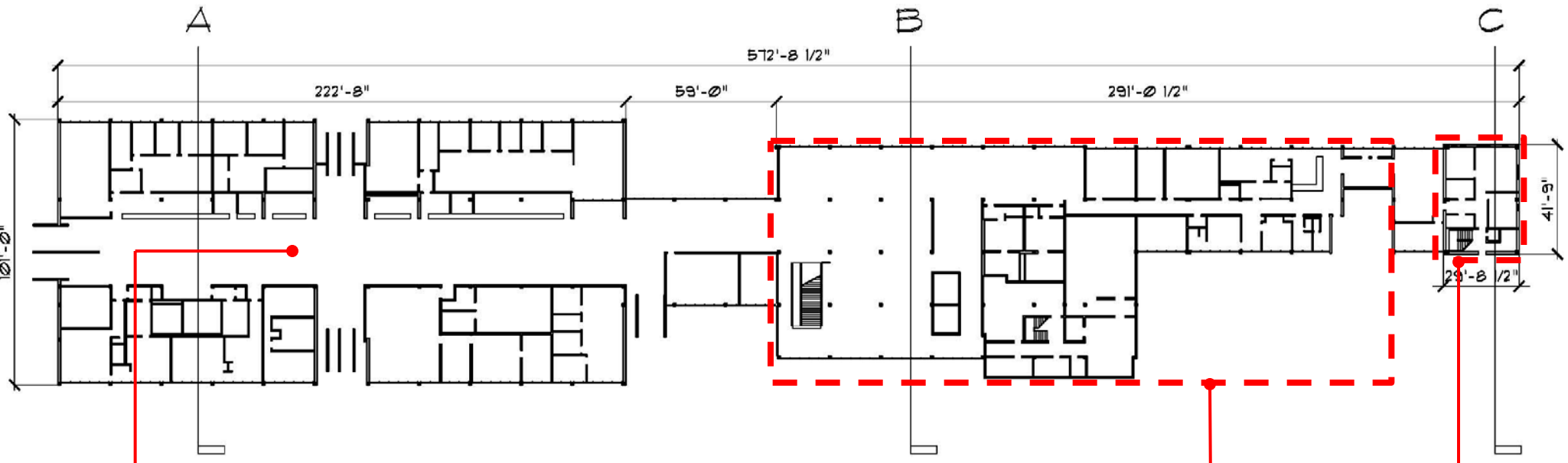
Fort Lauderdale, Florida



High Tech Center (HTC), Helsinki



# Existing Burke Terminal Plan and Images



BURKE TERMINAL BUILDING-FIRST LEVEL: 43,160 SF



Interior corridor & circulation



Historic Terminal to remain



Historic Terminal to remain



Airport Tower to remain



# Campus Environments: Repurposed Interiors



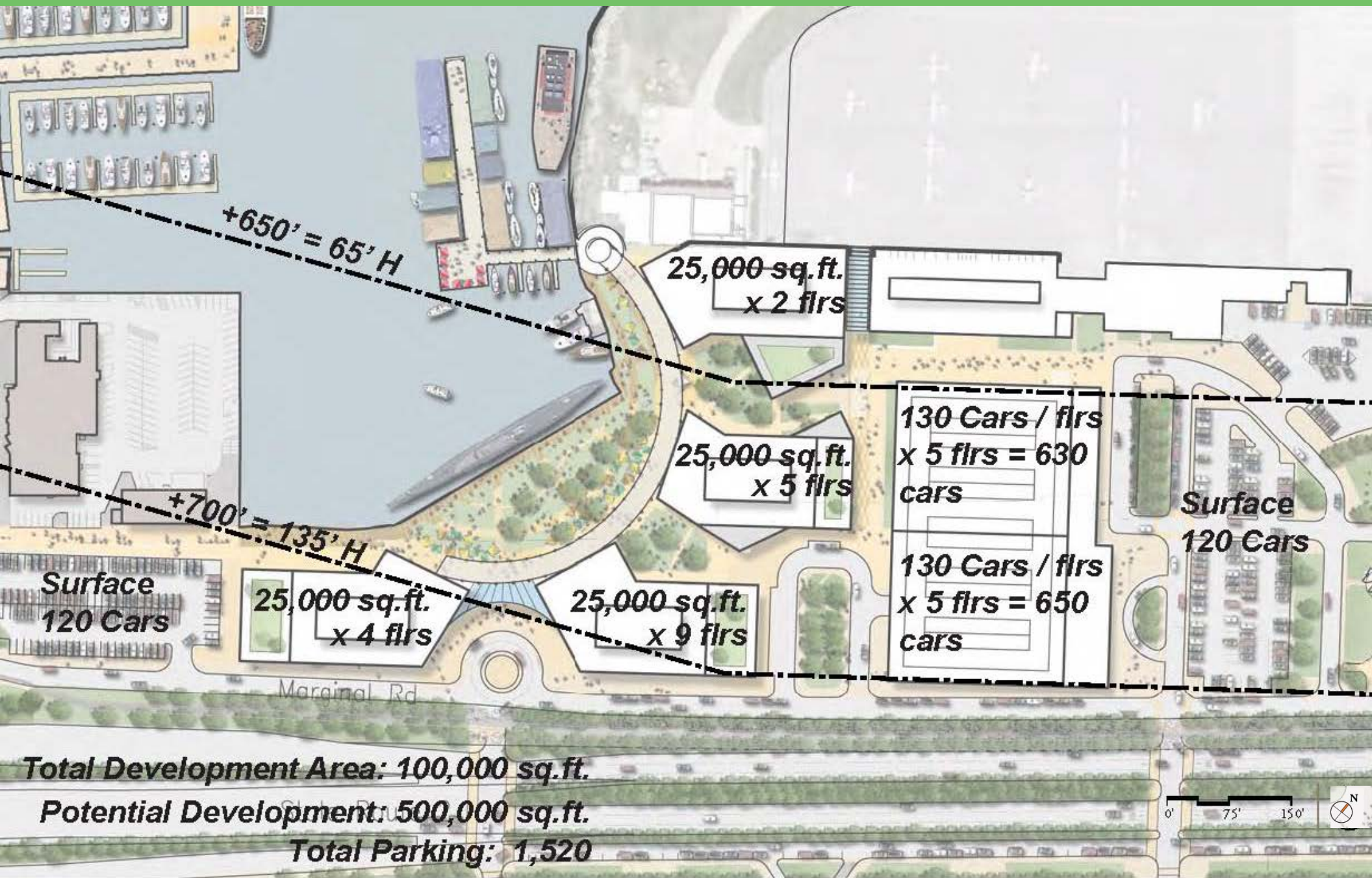


# Historic Burke Terminal Images





# Burke Redevelopment District: Development Sites





# Campus Environments: Nike Campus - Oregon



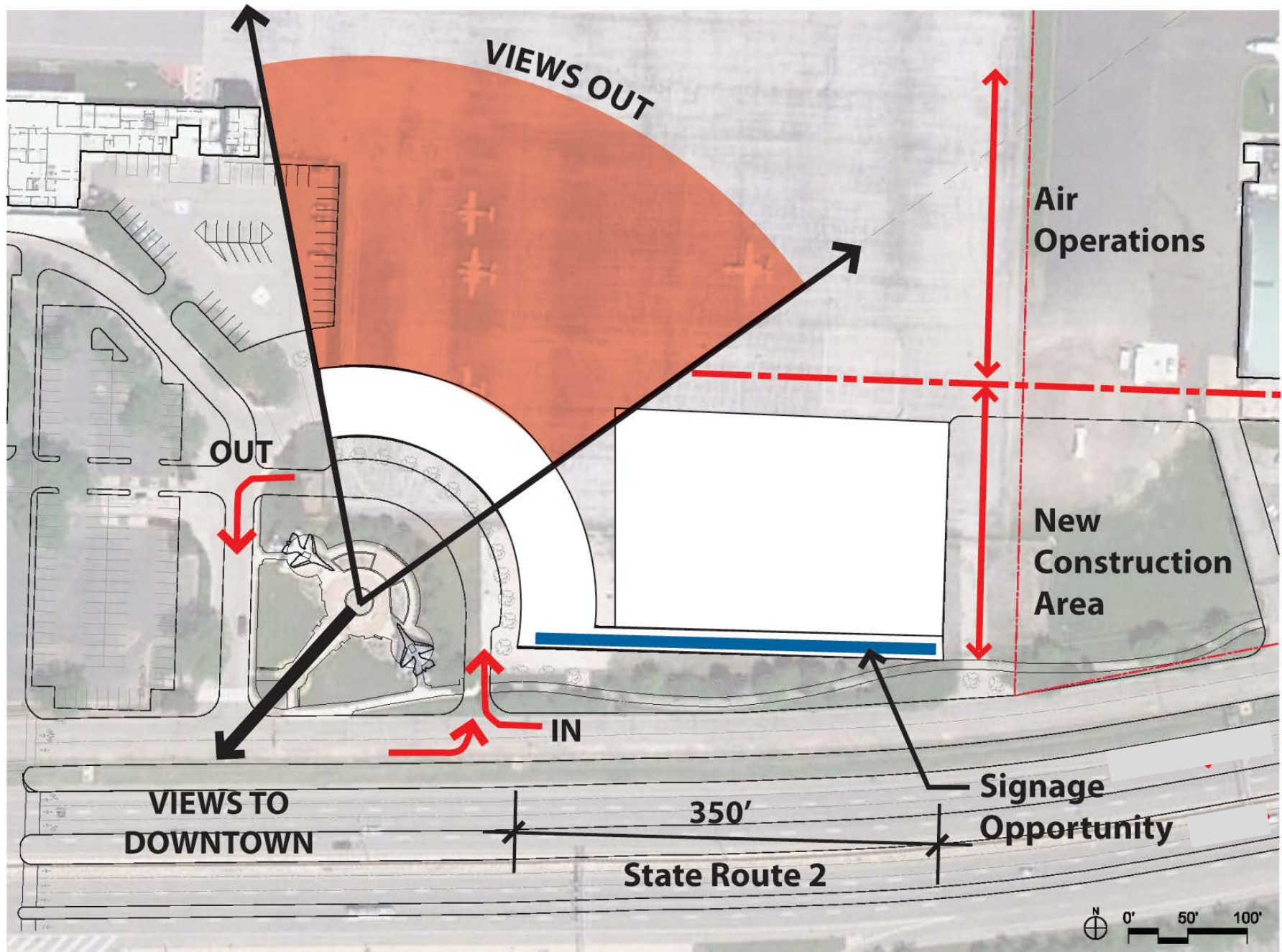


# Proposed Development





# Private Terminal Diagram





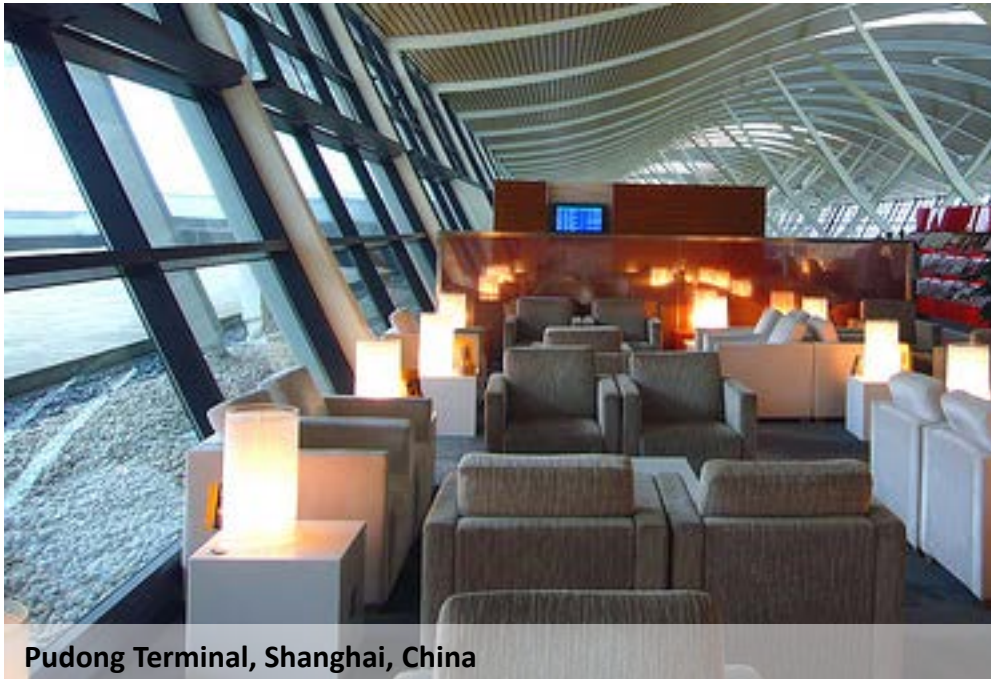
# Airport Lounges



Sydney, Australia



Singapore



Pudong Terminal, Shanghai, China



Lufthansa Airport Lounge , Frankfurt, Germany



# Private Terminal and Hangar



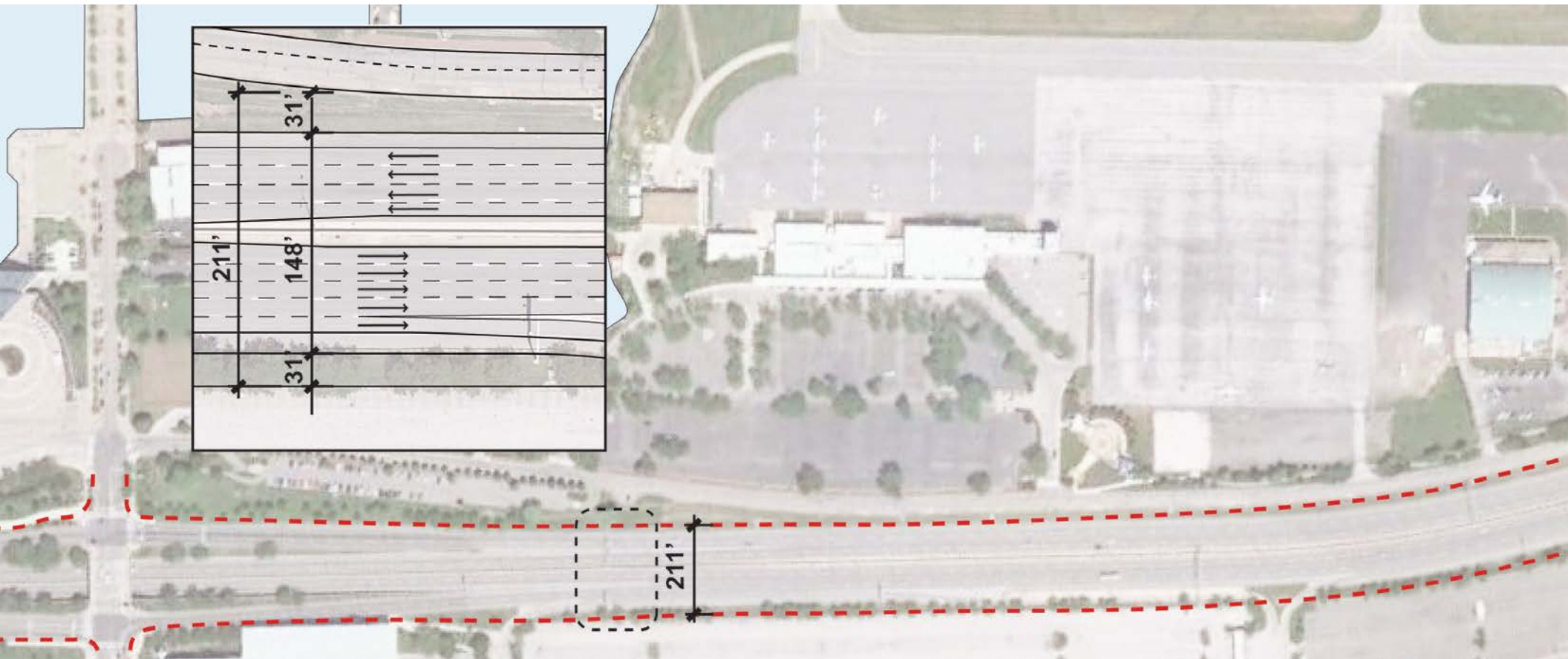


# Burke Vision Plan



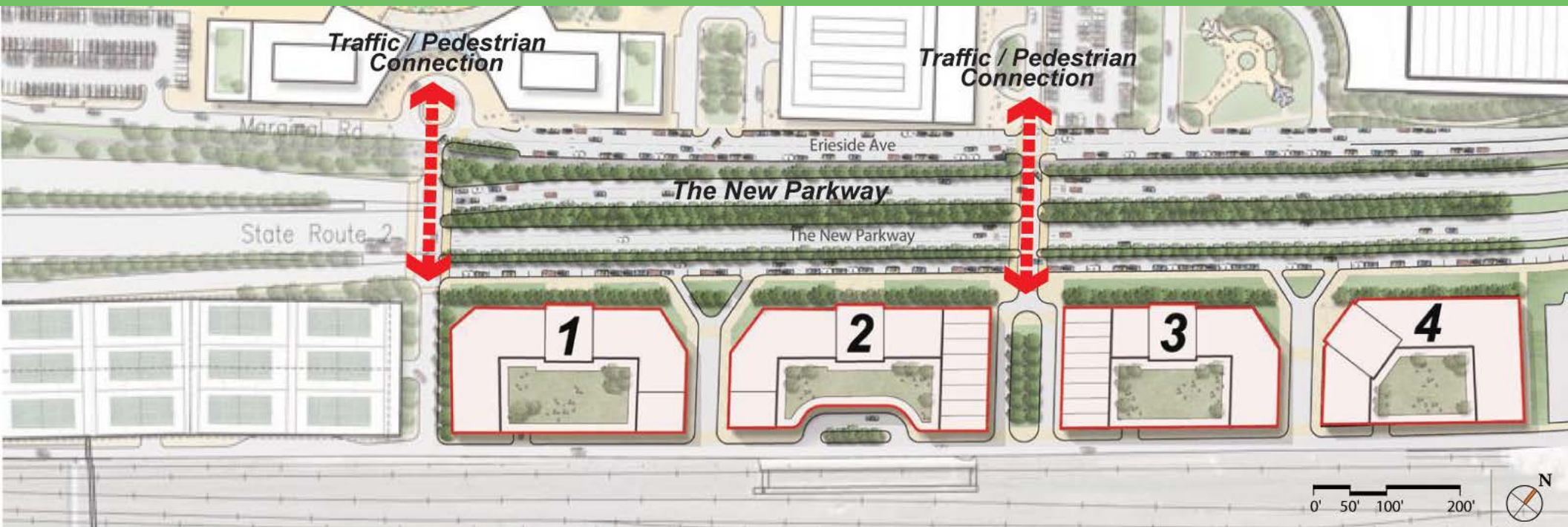


# Existing Shoreway / SR2



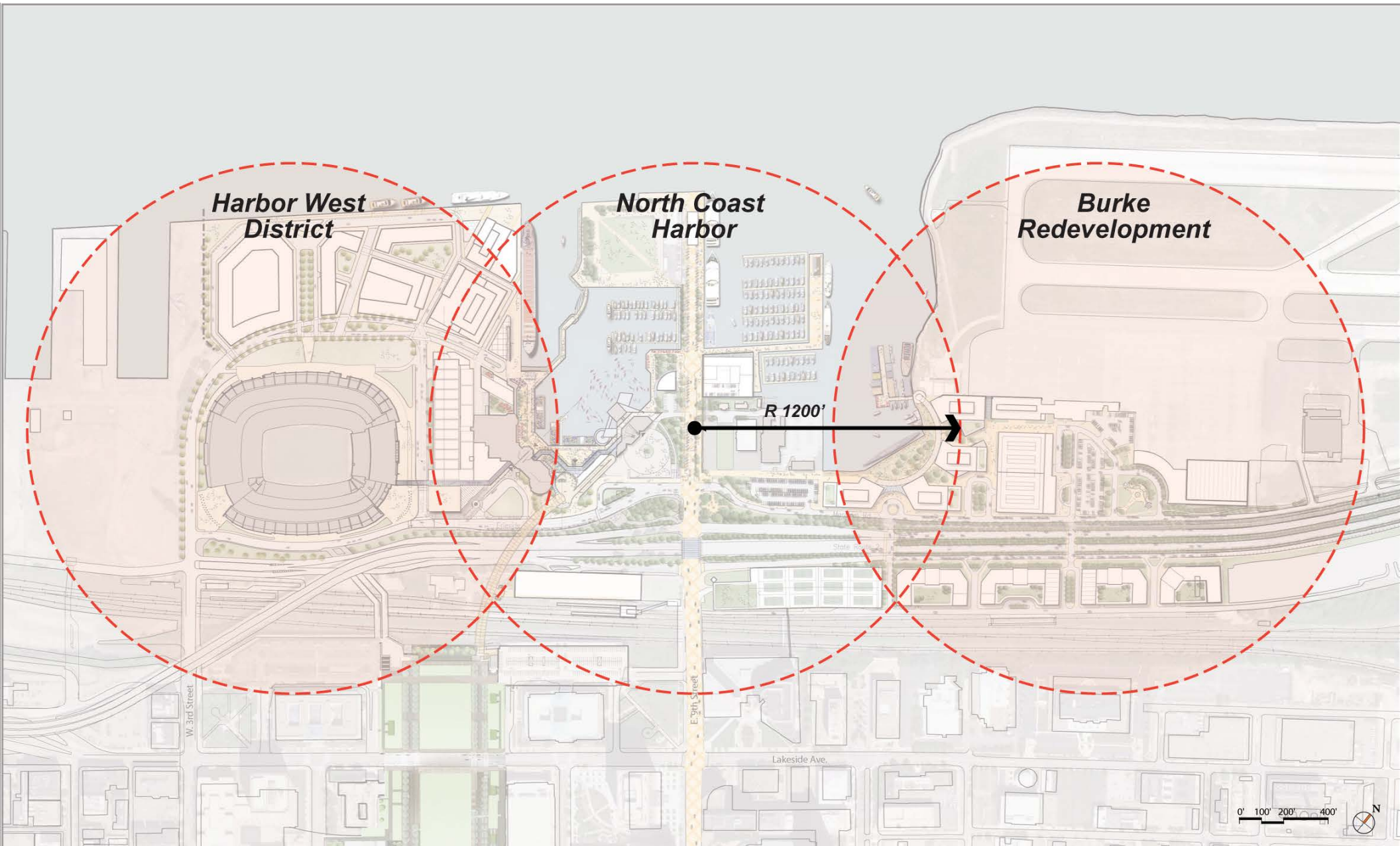


# Development Sites





# Central Focus on North Coast Harbor





- 1 - An Urban Fabric (Walkable, Dense & Mixed Use)**
- 2 - For All Seasons**
- 3 - Focused on a Water Plan**
- 4 - Learning from Cleveland Precedents**
- 5 - Based on Incremental Development**



# Downtown Waterfront

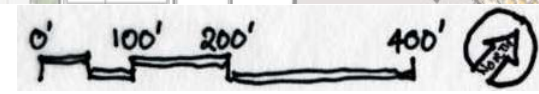
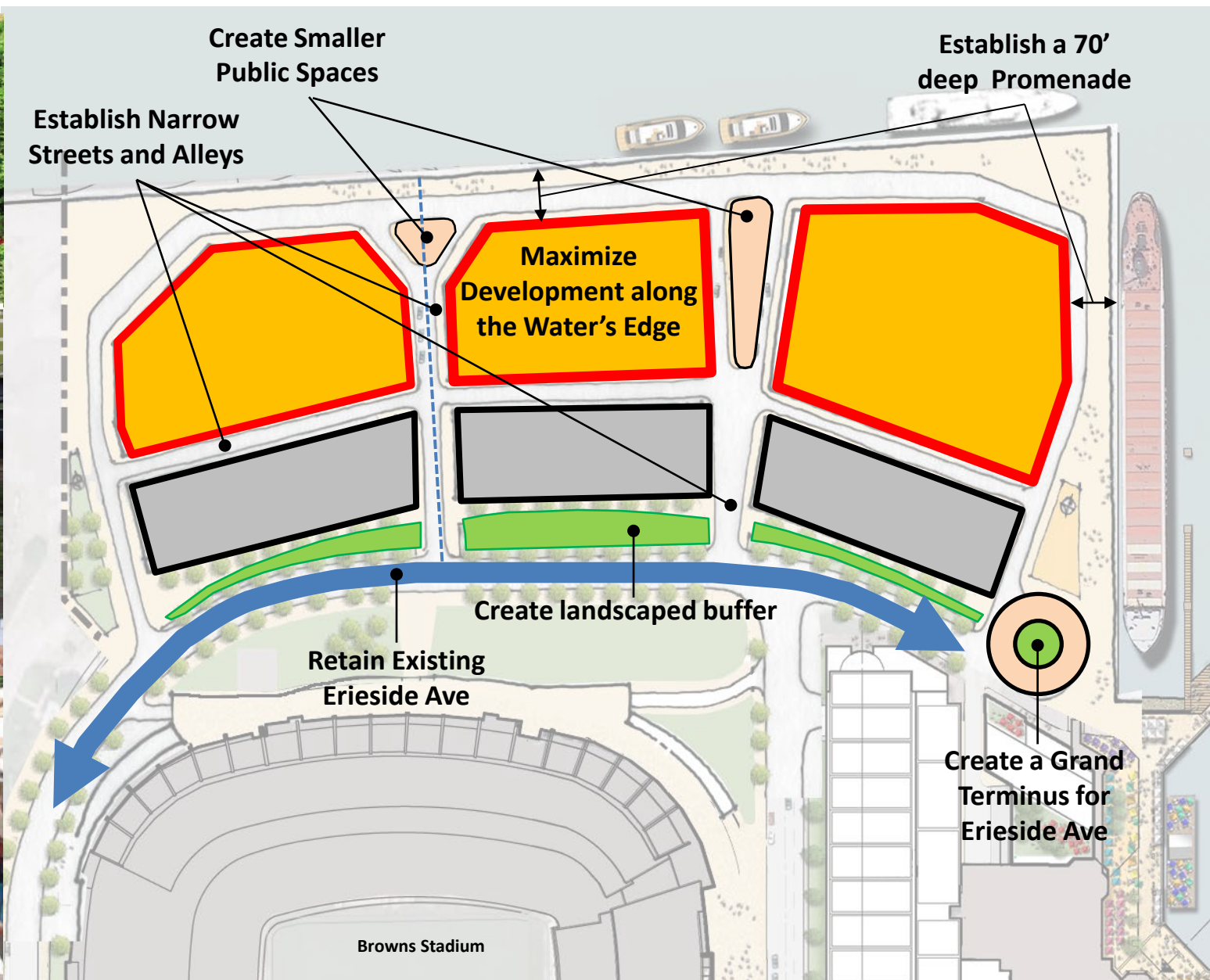






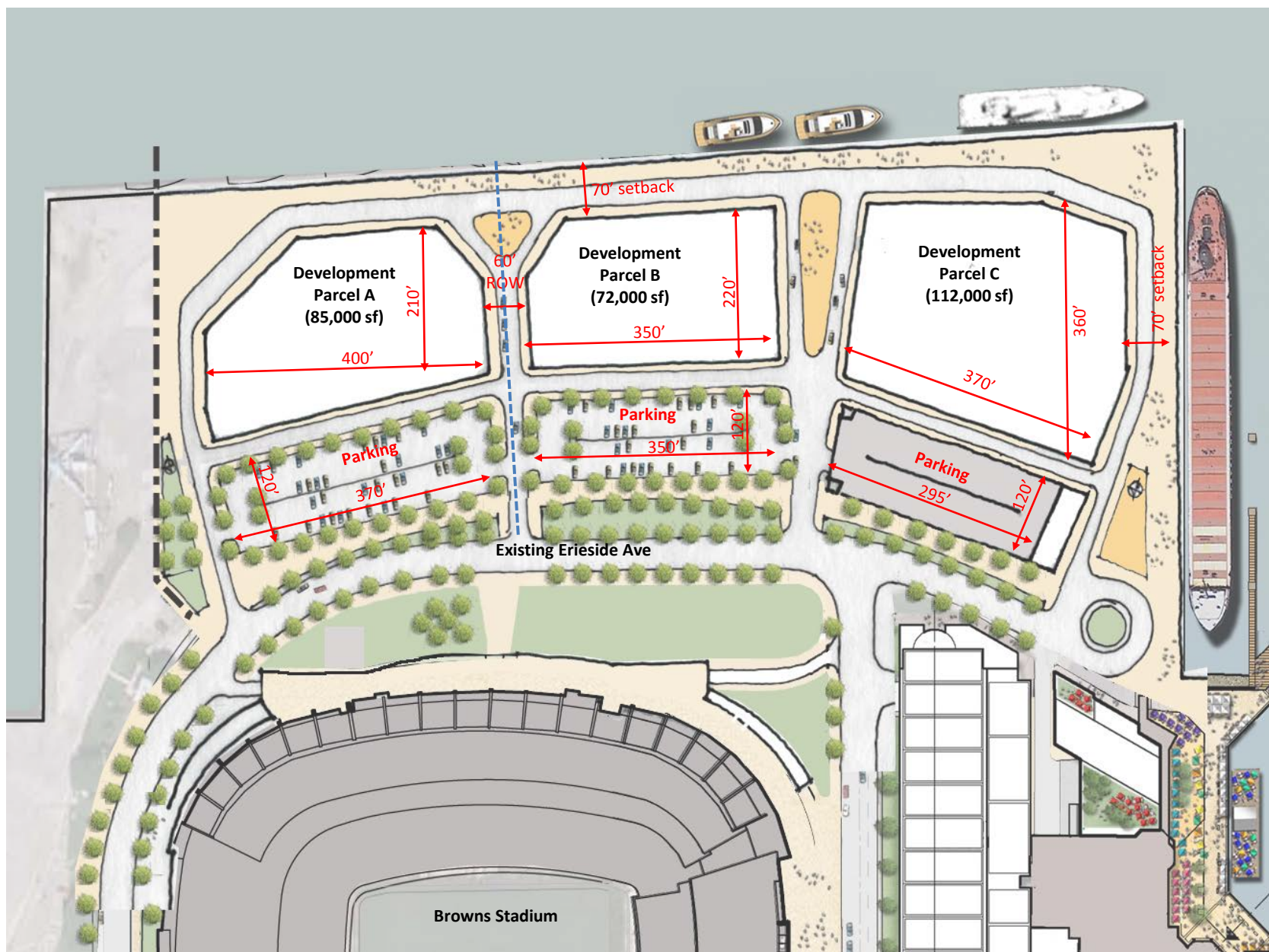


# Harbor West District: Development Sites





# Harbor West District: Development Sites



Total Development Area: **269,000 sf**