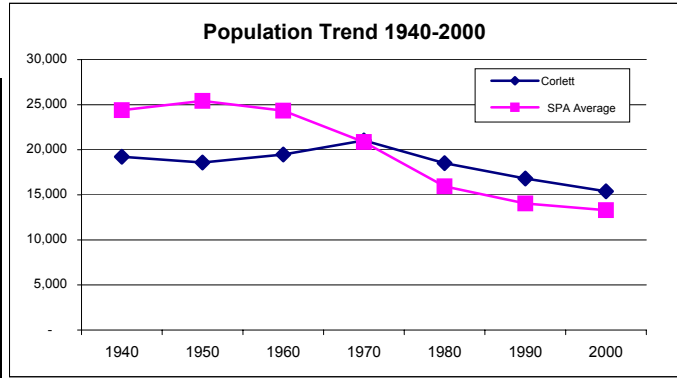


# Corlett

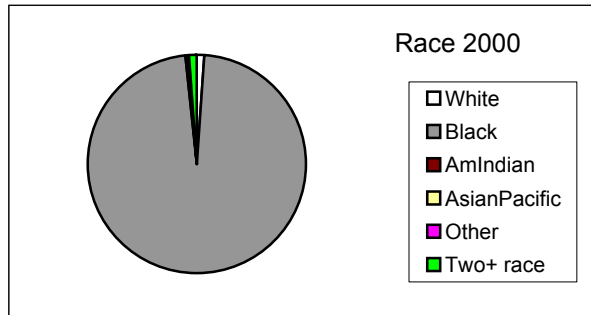
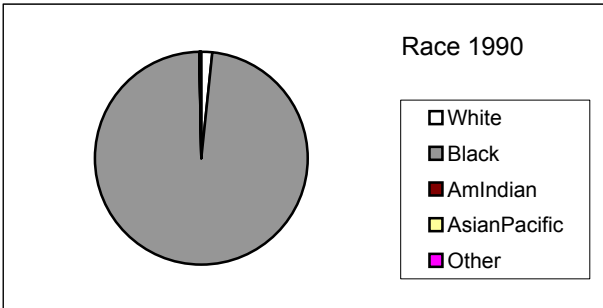
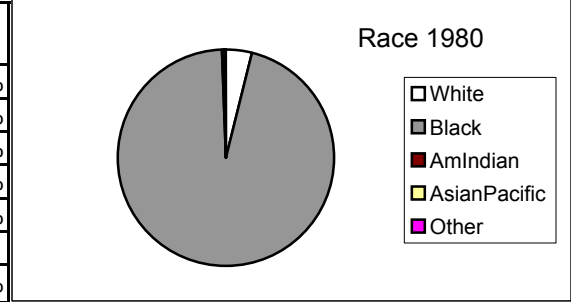
## POPULATION

YEAR	Corlett	City wide	SPA Change%	City Change %
1940	19,223	878,336		
1950	18,591	914,808	-3.3%	4.2%
1960	19,465	876,050	4.7%	-4.2%
1970	21,034	750,879	8.1%	-14.3%
1980	18,521	573,822	-11.9%	-23.6%
1990	16,804	505,616	-9.3%	-11.9%
2000	15,384	478,403	-8.5%	-5.4%



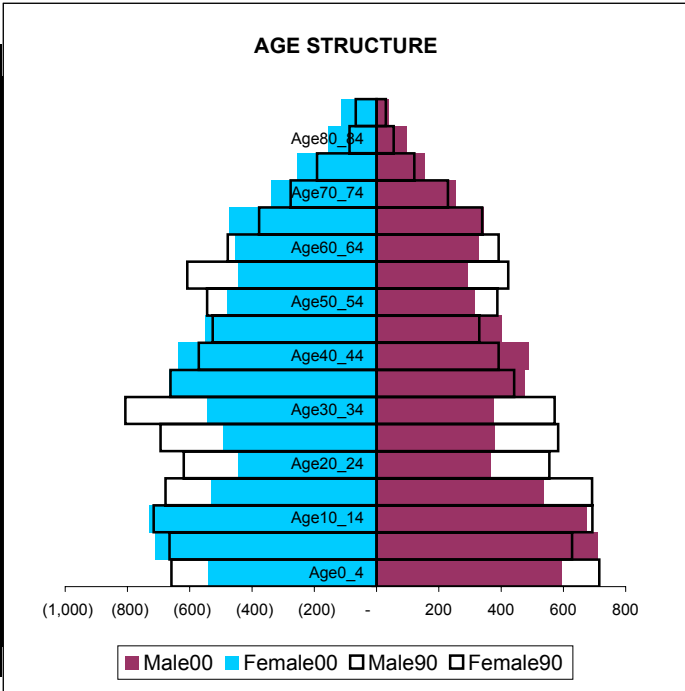
## RACE/HISPANIC ORIGIN

	1980	1990	2000	80-90 change%	90-00 change%
White	731	258	153	-64.7%	-40.7%
Black	17,698	16,480	14,993	-6.9%	-9.0%
AmIndian	16	25	20	56.3%	-20.0%
AsianPacific	24	15	17	-37.5%	13.3%
Other	52	26	28	-50.0%	7.7%
Two+ race			173		
Hispanic	102	85	117	-16.7%	37.6%



## AGE & SEX

Age	Male90	Male00	Female90	Female00
Age0_4	715	596	659	541
Age5_9	628	709	665	711
Age10_14	693	674	716	729
Age15_19	692	538	678	531
Age20_24	555	366	619	443
Age25_29	583	379	694	492
Age30_34	572	376	807	545
Age35_39	442	475	662	665
Age40_44	392	489	571	638
Age45_49	330	403	526	549
Age50_54	388	314	544	479
Age55_59	423	294	608	445
Age60_64	392	327	478	454
Age65_69	339	343	377	474
Age70_74	229	256	276	339
Age75_79	121	154	191	255
Age80_84	55	96	87	154
Age85P	30	39	67	112
<b>Total</b>	<b>7,579</b>	<b>6,828</b>	<b>9,225</b>	<b>8,556</b>

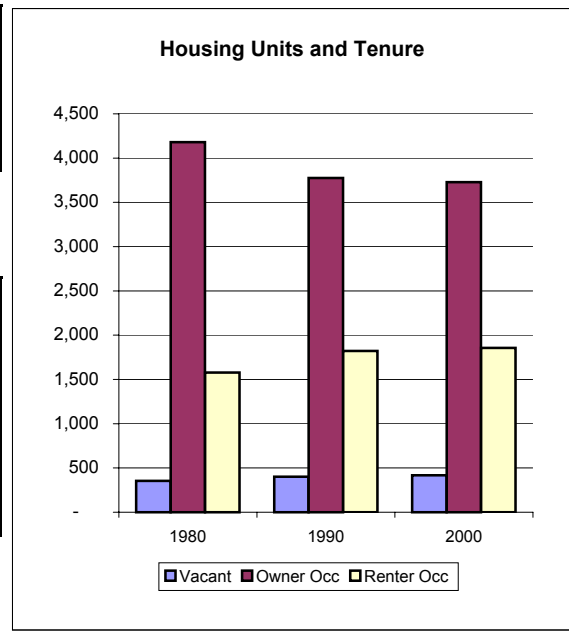


## FAMILIES & HOUSEHOLDS

	1980	1990	2000	80-90 change%	90-00 change%
Families	4,742	4,338	3,966	-8.5%	-8.6%
Households	5,758	5,597	5,584	-2.8%	-0.2%

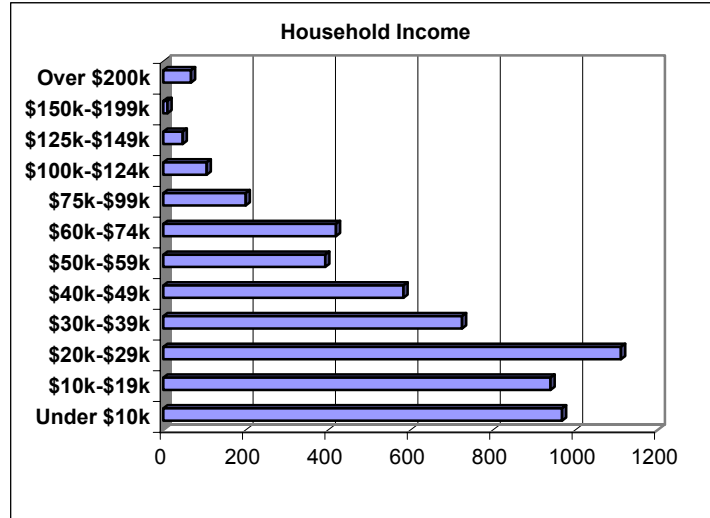
## HOUSING UNITS AND TENURE

	1980	1990	2000	80-90 change%	90-00 change%
Housing Units	6,112	5,999	6,002	-1.8%	0.1%
Occupied	5,758	5,597	5,584	-2.8%	-0.2%
Vacant	354	402	418	13.6%	4.0%
Owner Occ	4,180	3,776	3,728	-9.7%	-1.3%
Renter Occ	1,578	1,821	1,856	15.4%	1.9%
Vacant%	5.8%	6.7%	7.0%		
Owner Occ%	68.4%	62.9%	62.1%		
Renter Occ%	25.8%	30.4%	30.9%		



## HOUSEHOLD INCOME

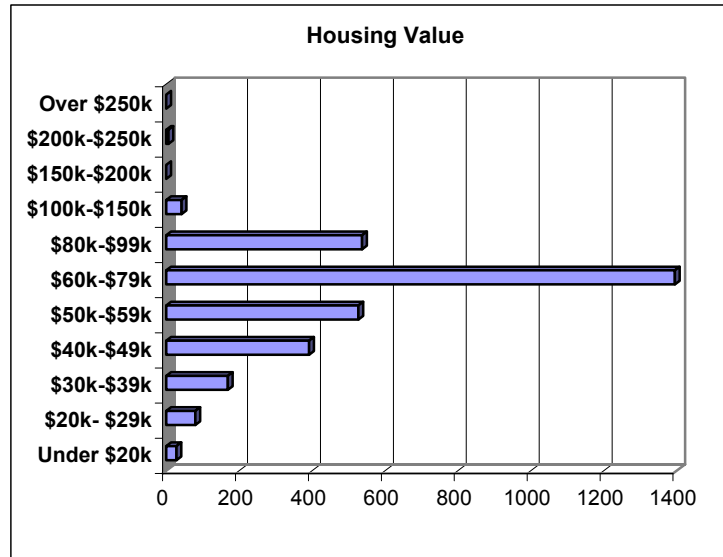
	Number	% SPA	% CITY
Under \$10k	968	17.4%	21.0%
\$10k-\$19k	940	16.9%	18.6%
\$20k-\$29k	1111	20.0%	16.7%
\$30k-\$39k	725	13.0%	12.7%
\$40k-\$49k	583	10.5%	9.3%
\$50k-\$59k	393	7.1%	7.0%
\$60k-\$74k	419	7.5%	6.5%
\$75k-\$99k	200	3.6%	4.9%
\$100k-\$124k	105	1.9%	1.7%
\$125k-\$149k	47	0.8%	0.6%
\$150k-\$199k	10	0.2%	0.4%
Over \$200k	67	1.2%	0.7%
<b>Total</b>	<b>5568</b>	<b>100.0%</b>	<b>100.0%</b>



	SPA	City
Median Household Income	\$27,883	\$25,928
Median Family Income	\$31,104	\$30,286
Persons in Poverty	2964	122479

## HOUSING VALUES - 2000

	Houses	% SPA	% CITY
Under \$20k	28	0.9%	2.00%
\$20k- \$29k	80	2.5%	3.20%
\$30k-\$39k	169	5.3%	5.60%
\$40k-\$49k	392	12.3%	8.90%
\$50k-\$59k	527	16.6%	11.10%
\$60k-\$79k	1395	43.9%	31.40%
\$80k-\$99k	537	16.9%	22.40%
\$100k-\$150k	42	1.3%	12.10%
\$150k-\$200k	0	0.0%	2.00%
\$200k-\$250k	6	0.2%	0.70%
Over \$250k	0	0.0%	0.70%
<b>TOTAL</b>	<b>3176</b>	<b>100.0%</b>	<b>100.00%</b>



	SPA	CITY
Median Housing Value	\$65,868	\$71,100
Median Contract Rent	\$398	\$379

## HOUSING TYPE

Structure Type	Units	%SPA	%CITY
Single-Family	4455	74.1%	52.8%
Attached	529		
Detached	3926		
Multi-Family	1536	25.6%	46.7%
2 Units	1271		
3 or More	265		
Other	19	0.3%	0.5%
<b>Total</b>	<b>6010</b>		

## OCCUPATIONS

	Number	%SPA	%CITY
Management	1002	18.7%	22.5%
Service	1199	22.4%	20.9%
Sales	1572	29.3%	26.7%
Farm	0	0.0%	0.1%
Construction	354	6.6%	7.5%
Production	1232	23.0%	22.3%
<b>Total</b>	<b>5359</b>	<b>100.0%</b>	<b>100.0%</b>

