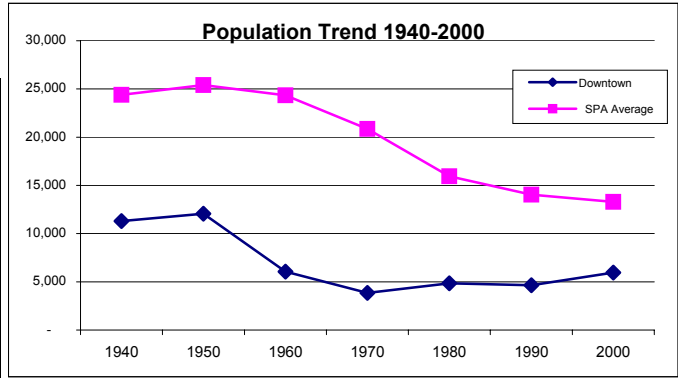


Downtown

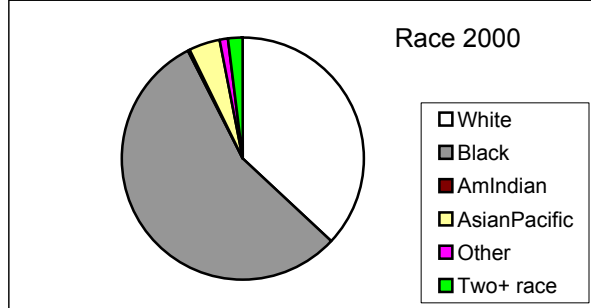
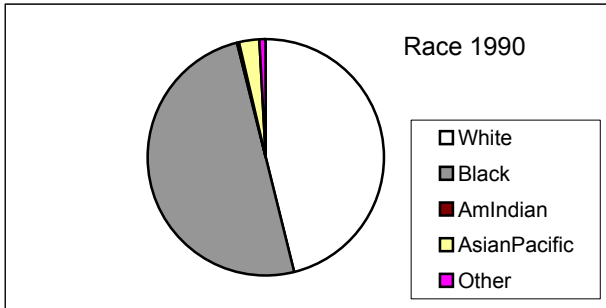
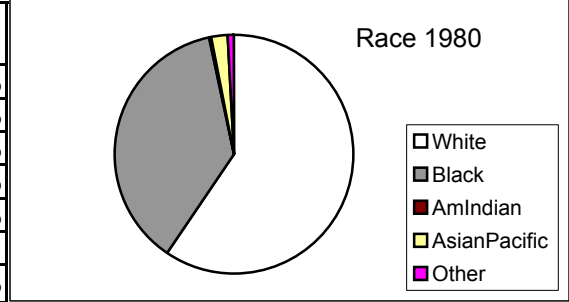
POPULATION

YEAR	Downtown n	City wide	SPA Change%	City Change %
1940	11,292	878,336		
1950	12,068	914,808	6.9%	4.2%
1960	6,051	876,050	-49.9%	-4.2%
1970	3,844	750,879	-36.5%	-14.3%
1980	4,845	573,822	26.0%	-23.6%
1990	4,651	505,616	-4.0%	-11.9%
2000	5,960	478,403	28.1%	-5.4%



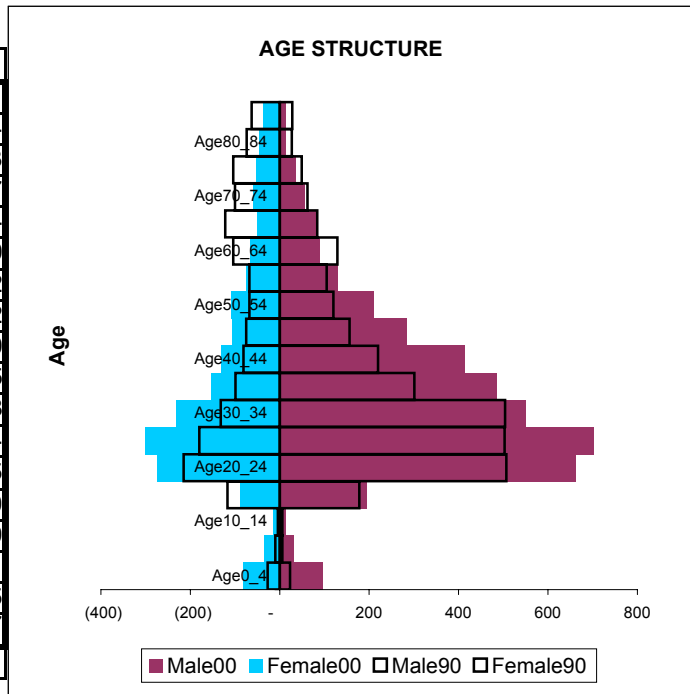
RACE/HISPANIC ORIGIN

	1980	1990	2000	80-90 change%	90-00 change%
White	2,886	2,139	2,197	-25.9%	2.7%
Black	1,795	2,326	3,320	29.6%	42.7%
AmIndian	15	18	8	20.0%	-55.6%
AsianPacific	102	124	250	21.6%	101.6%
Other	47	44	69	-6.4%	56.8%
Two+ race			116		
Hispanic	77	106	182	37.7%	71.7%



AGE & SEX

Age	Male90	Male00	Female90	Female00
Age0_4	23	96	27	81
Age5_9	6	31	10	34
Age10_14	6	14	4	13
Age15_19	178	194	117	87
Age20_24	507	661	215	274
Age25_29	503	702	180	300
Age30_34	504	551	132	232
Age35_39	301	485	99	152
Age40_44	220	414	81	130
Age45_49	156	284	75	105
Age50_54	120	209	68	108
Age55_59	105	129	68	74
Age60_64	129	90	104	65
Age65_69	84	85	122	50
Age70_74	62	56	100	59
Age75_79	49	36	104	51
Age80_84	27	13	74	45
Age85P	28	13	63	37
Total	3,008	4,063	1,643	1,897

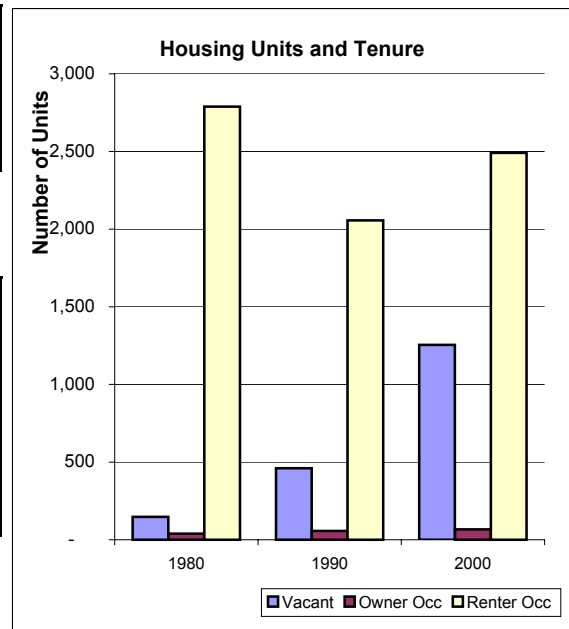


FAMILIES & HOUSEHOLDS

	1980	1990	2000	80-90 change%	90-00 change%
Families	438	312	407	-28.8%	30.4%
Households	2,828	2,113	2,558	-25.3%	21.1%

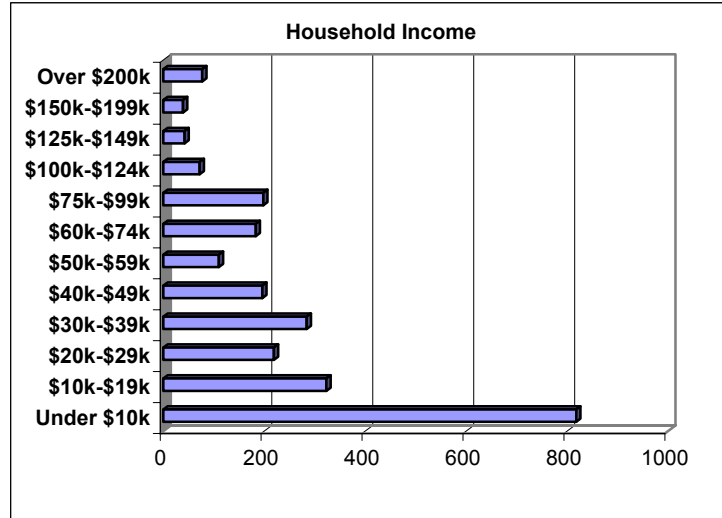
HOUSING UNITS AND TENURE

	1980	1990	2000	80-90 change%	90-00 change%
Housing Units	2,975	2,573	3,813	-13.5%	48.2%
Occupied	2,828	2,113	2,558	-25.3%	21.1%
Vacant	147	460	1,255	212.9%	172.8%
Owner Occ	39	57	67	46.2%	17.5%
Renter Occ	2,789	2,056	2,491	-26.3%	21.2%
Vacant%	4.9%	17.9%	32.9%		
Owner Occ%	1.3%	2.2%	1.8%		
Renter Occ%	93.7%	79.9%	65.3%		



HOUSEHOLD INCOME

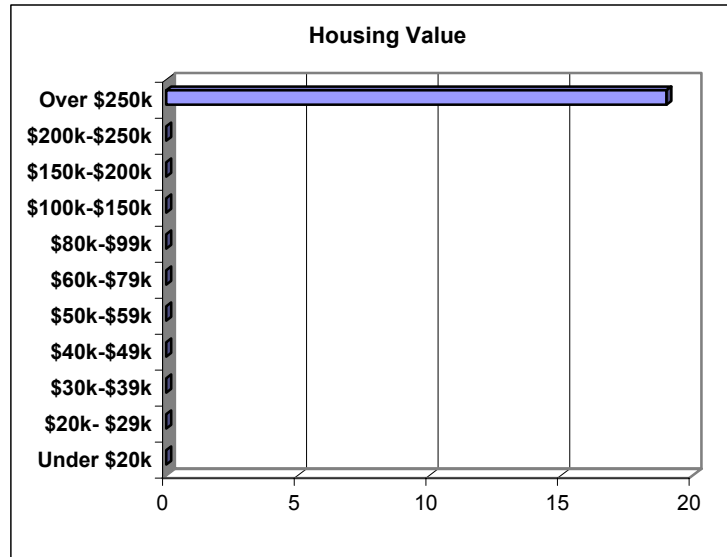
	Number	% SPA	% CITY
Under \$10k	818	31.9%	21.0%
\$10k-\$19k	323	12.6%	18.6%
\$20k-\$29k	219	8.6%	16.7%
\$30k-\$39k	284	11.1%	12.7%
\$40k-\$49k	196	7.7%	9.3%
\$50k-\$59k	110	4.3%	7.0%
\$60k-\$74k	183	7.1%	6.5%
\$75k-\$99k	198	7.7%	4.9%
\$100k-\$124k	72	2.8%	1.7%
\$125k-\$149k	42	1.6%	0.6%
\$150k-\$199k	39	1.5%	0.4%
Over \$200k	77	3.0%	0.7%
Total	2561	100.0%	100.0%



	SPA	City
Median Household Income	\$26,285	\$25,928
Median Family Income	\$31,827	\$30,286
Persons in Poverty	1334	122479

HOUSING VALUES - 2000

	Houses	% SPA	% CITY
Under \$20k	0	0.0%	2.00%
\$20k- \$29k	0	0.0%	3.20%
\$30k-\$39k	0	0.0%	5.60%
\$40k-\$49k	0	0.0%	8.90%
\$50k-\$59k	0	0.0%	11.10%
\$60k-\$79k	0	0.0%	31.40%
\$80k-\$99k	0	0.0%	22.40%
\$100k-\$150k	0	0.0%	12.10%
\$150k-\$200k	0	0.0%	2.00%
\$200k-\$250k	0	0.0%	0.70%
Over \$250k	19	100.0%	0.70%
TOTAL	19	100.0%	100.00%



	SPA	CITY
Median Housing Value	\$145,833	\$71,100
Median Contract Rent	\$600	\$379

HOUSING TYPE

Structure Type	Units	%SPA	%CITY
Single-Family	25	0.7%	52.8%
Attached	15		
Detached	10		
Multi-Family	3802	99.3%	46.7%
2 Units	32		
3 or More	3770		
Other	0	0.0%	0.5%
Total	3827		

OCCUPATIONS

	Number	%SPA	%CITY
Management	1070	54.5%	22.5%
Service	194	9.9%	20.9%
Sales	490	25.0%	26.7%
Farm	0	0.0%	0.1%
Construction	21	1.1%	7.5%
Production	188	9.6%	22.3%
Total	1963	100.0%	100.0%

