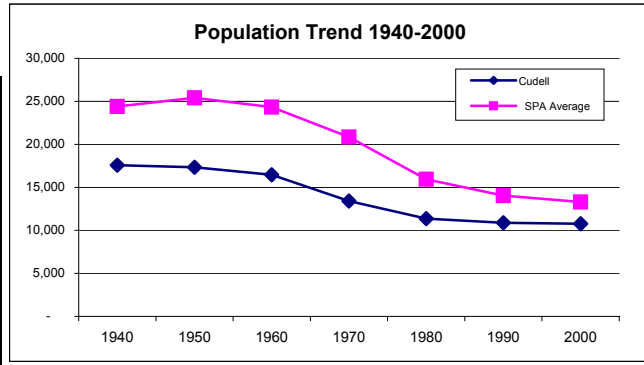


# Cudell

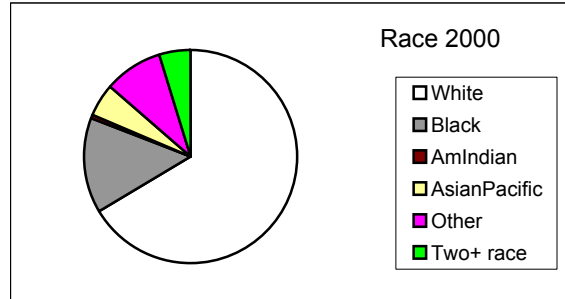
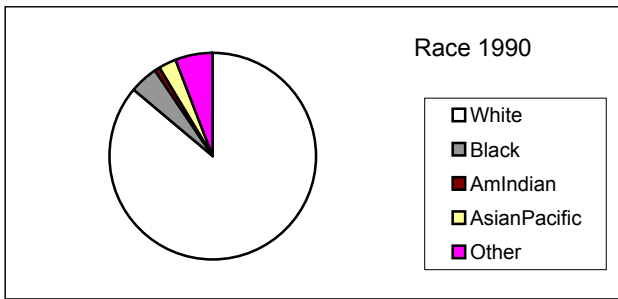
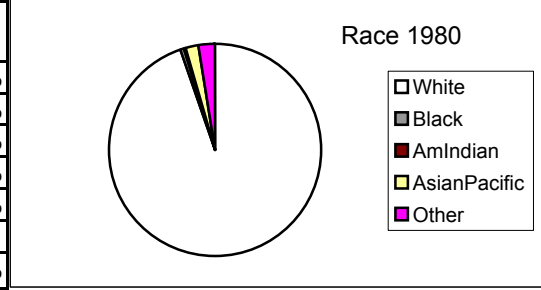
## POPULATION

YEAR	Cudell	City wide	SPA Change%	Change %
1940	17,585	878,336		
1950	17,325	914,808	-1.5%	4.2%
1960	16,466	876,050	-5.0%	-4.2%
1970	13,408	750,879	-18.6%	-14.3%
1980	11,355	573,822	-15.3%	-23.6%
1990	10,874	505,616	-4.2%	-11.9%
2000	10,761	478,403	-1.0%	-5.4%



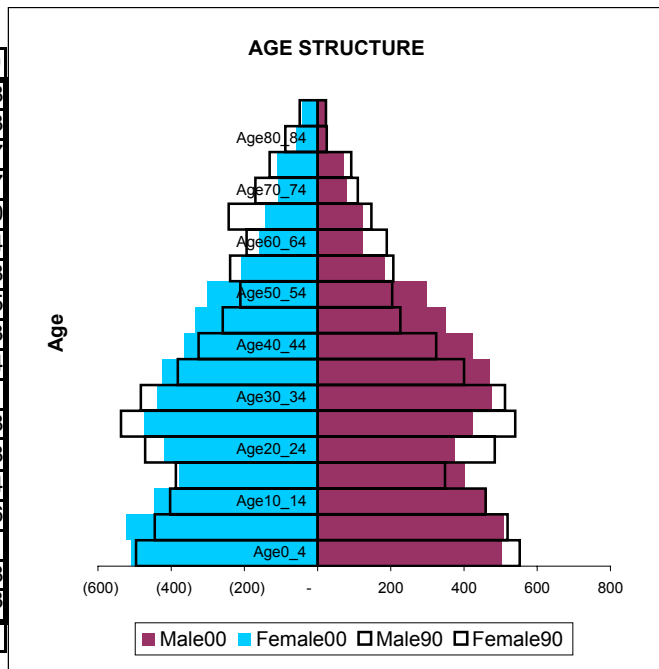
## RACE/HISPANIC ORIGIN

	1980	1990	2000	80-90 change%	90-00 change%
White	10,751	9,378	7,134	-12.8%	-23.9%
Black	56	455	1,569	712.5%	244.8%
AmIndian	45	104	48	131.1%	-53.8%
AsianPacific	220	308	531	40.0%	72.4%
Other	283	629	969	122.3%	54.1%
Two+ race			510		
Hispanic	590	1,013	1,791	71.7%	76.8%



## AGE & SEX

Age	Male90	Male00	Female90	Female00
Age0_4	552	502	496	508
Age5_9	519	509	445	523
Age10_14	459	461	403	447
Age15_19	348	402	387	377
Age20_24	484	374	471	420
Age25_29	540	424	537	474
Age30_34	512	476	483	438
Age35_39	400	469	382	425
Age40_44	324	425	325	363
Age45_49	226	350	259	334
Age50_54	204	299	211	301
Age55_59	207	184	239	208
Age60_64	189	124	194	158
Age65_69	147	124	243	144
Age70_74	110	80	170	106
Age75_79	92	71	131	111
Age80_84	25	24	88	58
Age85P	23	25	49	43
<b>Total</b>	<b>5,361</b>	<b>5,323</b>	<b>5,513</b>	<b>5,438</b>

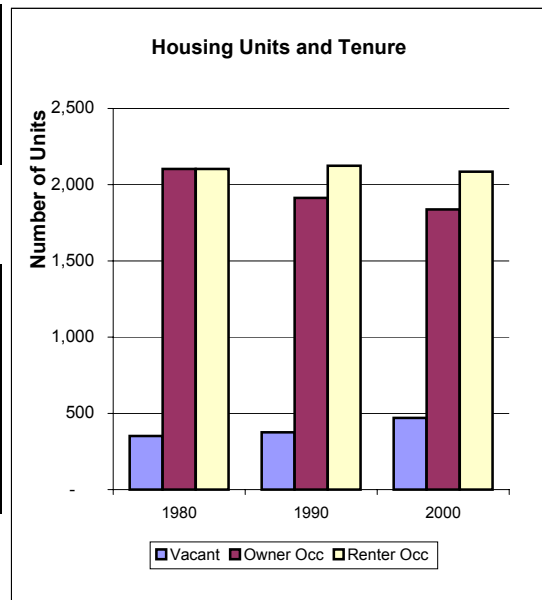


## FAMILIES & HOUSEHOLDS

	1980	1990	2000	80-90 change%	90-00 change%
Families	2,903	2,682	2,496	-7.6%	-6.9%
Households	4,206	4,037	3,923	-4.0%	-2.8%

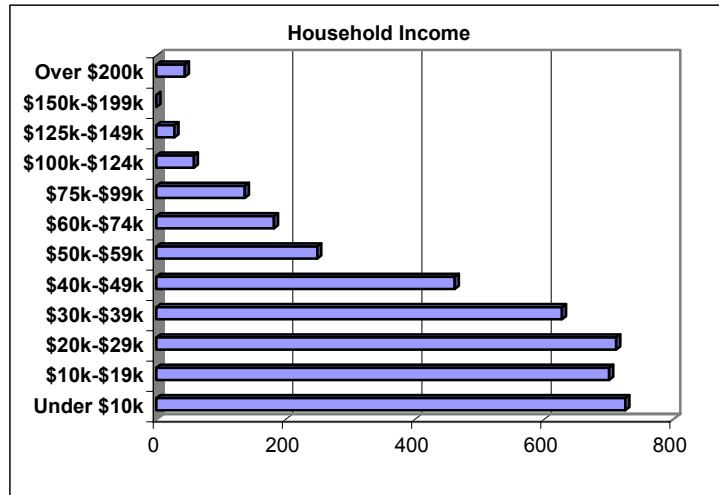
## HOUSING UNITS AND TENURE

	1980	1990	2000	80-90 change%	90-00 change%
Housing Units	4,558	4,413	4,393	-3.2%	-0.5%
Occupied	4,206	4,037	3,923	-4.0%	-2.8%
Vacant	352	376	470	6.8%	25.0%
Owner Occ	2,103	1,913	1,838	-9.0%	-3.9%
Renter Occ	2,103	2,124	2,085	1.0%	-1.8%
Vacant%	7.7%	8.5%	10.7%		
Owner Occ%	46.1%	43.3%	41.8%		
Renter Occ%	46.1%	48.1%	47.5%		



## HOUSEHOLD INCOME

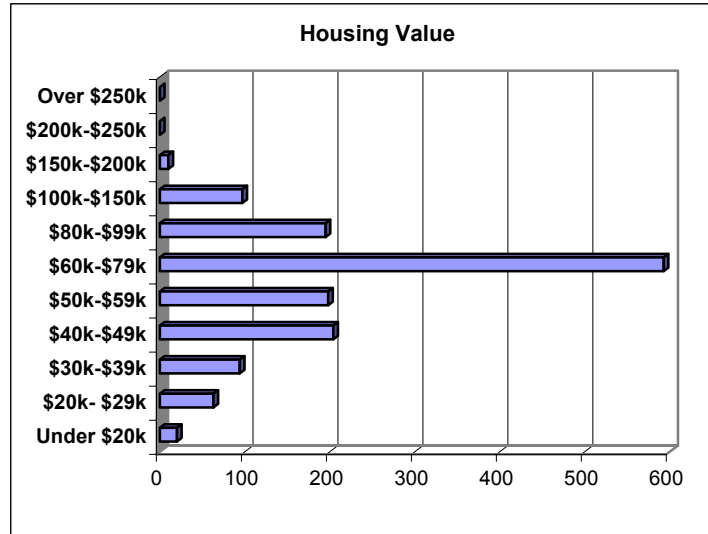
	Number	% SPA	% CITY
Under \$10k	726	18.5%	21.0%
\$10k-\$19k	701	17.9%	18.6%
\$20k-\$29k	712	18.1%	16.7%
\$30k-\$39k	628	16.0%	12.7%
\$40k-\$49k	462	11.8%	9.3%
\$50k-\$59k	249	6.3%	7.0%
\$60k-\$74k	182	4.6%	6.5%
\$75k-\$99k	137	3.5%	4.9%
\$100k-\$124k	58	1.5%	1.7%
\$125k-\$149k	28	0.7%	0.6%
\$150k-\$199k	0	0.0%	0.4%
Over \$200k	44	1.1%	0.7%
<b>Total</b>	<b>3927</b>	<b>100.0%</b>	<b>100.0%</b>



	SPA	City
Median Household Income	\$27,672	\$25,928
Median Family Income	\$29,904	\$30,286
Persons in Poverty	3111	122479

## HOUSING VALUES - 2000

	Houses	% SPA	% CITY
Under \$20k	20	1.4%	2.00%
\$20k- \$29k	63	4.3%	3.20%
\$30k-\$39k	94	6.4%	5.60%
\$40k-\$49k	204	13.8%	8.90%
\$50k-\$59k	198	13.4%	11.10%
\$60k-\$79k	593	40.2%	31.40%
\$80k-\$99k	195	13.2%	22.40%
\$100k-\$150k	97	6.6%	12.10%
\$150k-\$200k	10	0.7%	2.00%
\$200k-\$250k	0	0.0%	0.70%
Over \$250k	0	0.0%	0.70%
<b>TOTAL</b>	<b>1474</b>	<b>100.0%</b>	<b>100.00%</b>



	SPA	CITY
Median Housing Value	\$64,314	\$71,100
Median Contract Rent	\$399	\$379

## HOUSING TYPE

Structure Type	Units	%SPA	%CITY
Single-Family	2219	50.7%	52.8%
Attached	295		
Detached	1924		
Multi-Family	2143	48.9%	46.7%
2 Units	1135		
3 or More	1008		
Other	19	0.4%	0.5%
<b>Total</b>	<b>4381</b>		

## OCCUPATIONS

	Number	%SPA	%CITY
Management	613	14.0%	22.5%
Service	811	18.5%	20.9%
Sales	1124	25.7%	26.7%
Farm	0	0.0%	0.1%
Construction	493	11.3%	7.5%
Production	1339	30.6%	22.3%
<b>Total</b>	<b>4380</b>	<b>100.0%</b>	<b>100.0%</b>

