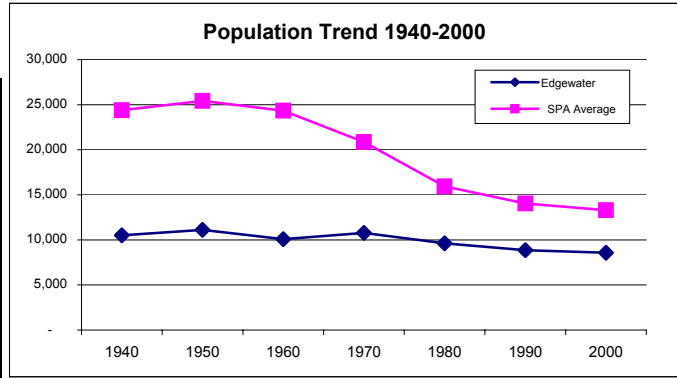


# Edgewater

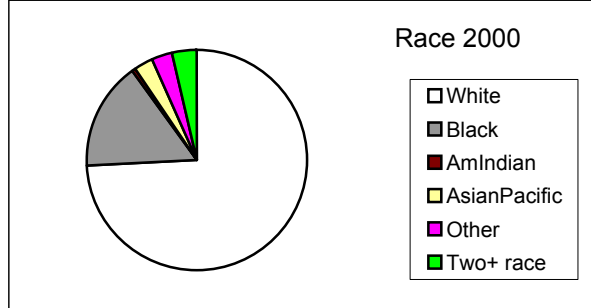
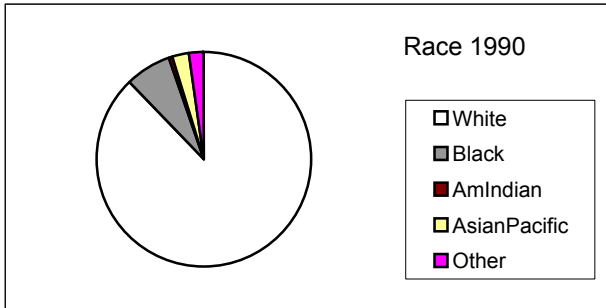
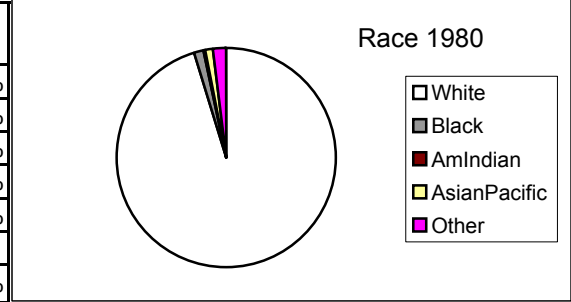
## POPULATION

YEAR	Edgewater	City wide	SPA Change%	City Change %
1940	10,513	878,336		
1950	11,107	914,808	5.7%	4.2%
1960	10,089	876,050	-9.2%	-4.2%
1970	10,772	750,879	6.8%	-14.3%
1980	9,628	573,822	-10.6%	-23.6%
1990	8,861	505,616	-8.0%	-11.9%
2000	8,571	478,403	-3.3%	-5.4%



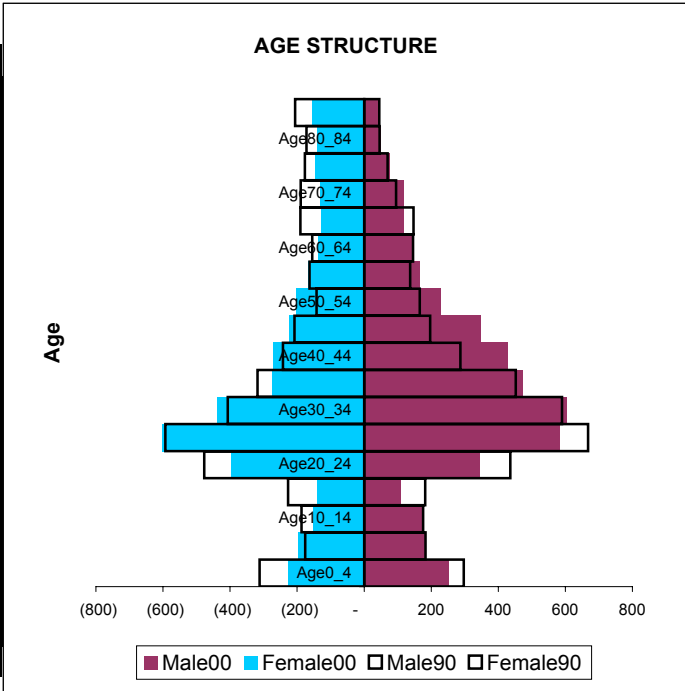
## RACE/HISPANIC ORIGIN

	1980	1990	2000	80-90 change%	90-00 change%
White	9,160	7,771	6,356	-15.2%	-18.2%
Black	141	617	1,363	337.6%	120.9%
AmIndian	44	45	45	2.3%	0.0%
AsianPacific	104	234	240	125.0%	2.6%
Other	179	194	249	8.4%	28.4%
Two+ race			318		
Hispanic	286	418	628	46.2%	50.2%



## AGE & SEX

Age	Male90	Male00	Female90	Female00
Age0_4	297	253	312	227
Age5_9	183	183	176	196
Age10_14	176	174	187	152
Age15_19	182	108	227	140
Age20_24	436	343	477	396
Age25_29	668	583	593	603
Age30_34	590	605	407	438
Age35_39	452	471	318	273
Age40_44	287	429	242	272
Age45_49	197	348	208	223
Age50_54	166	228	142	203
Age55_59	137	164	163	167
Age60_64	146	143	155	138
Age65_69	147	117	190	129
Age70_74	95	117	189	133
Age75_79	70	77	177	147
Age80_84	46	50	172	140
Age85P	45	47	206	154
<b>Total</b>	<b>4,320</b>	<b>4,440</b>	<b>4,541</b>	<b>4,131</b>

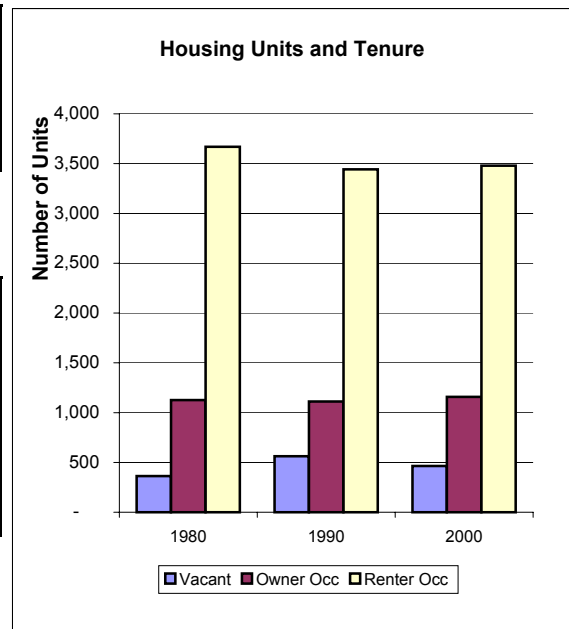


## FAMILIES & HOUSEHOLDS

	1980	1990	2000	80-90 change%	90-00 change%
Families	1,997	1,656	1,437	-17.1%	-13.2%
Households	4,795	4,554	4,638	-5.0%	1.8%

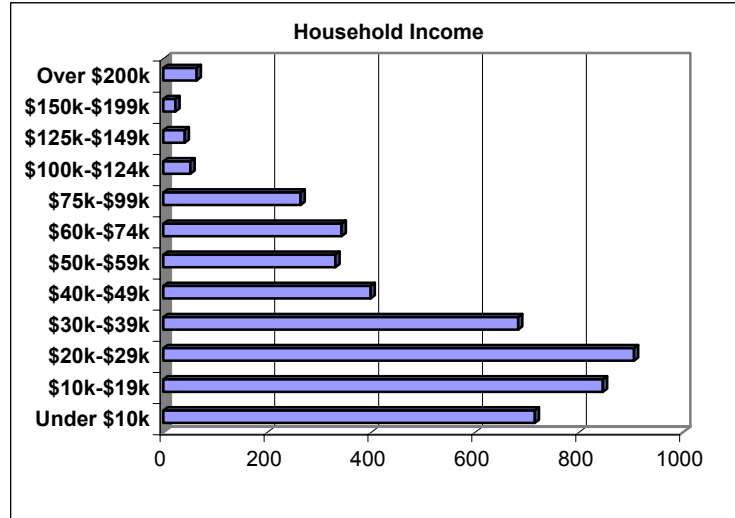
## HOUSING UNITS AND TENURE

	1980	1990	2000	80-90 change%	90-00 change%
Housing Units	5,158	5,117	5,102	-0.8%	-0.3%
Occupied	4,795	4,554	4,638	-5.0%	1.8%
Vacant	363	563	464	55.1%	-17.6%
Owner Occ	1,126	1,112	1,158	-1.2%	4.1%
Renter Occ	3,669	3,442	3,480	-6.2%	1.1%
Vacant%	7.0%	11.0%	9.1%		
Owner Occ%	21.8%	21.7%	22.7%		
Renter Occ%	71.1%	67.3%	68.2%		



## HOUSEHOLD INCOME

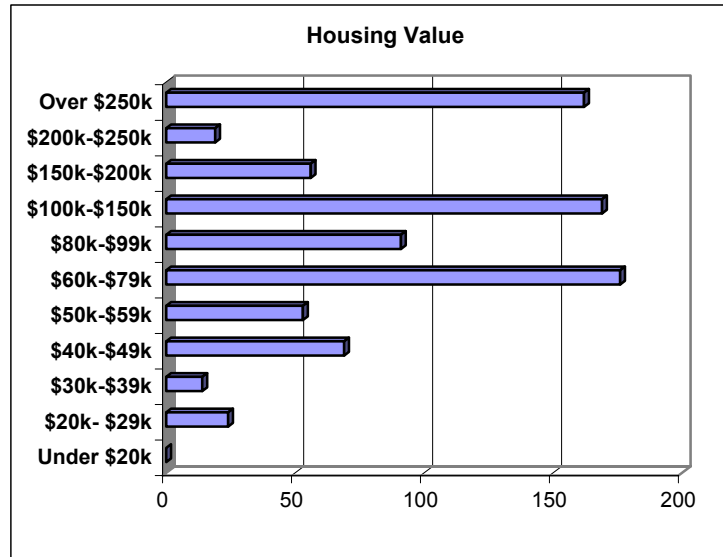
	Number	% SPA	% CITY
Under \$10k	715	15.3%	21.0%
\$10k-\$19k	846	18.1%	18.6%
\$20k-\$29k	906	19.4%	16.7%
\$30k-\$39k	683	14.6%	12.7%
\$40k-\$49k	399	8.5%	9.3%
\$50k-\$59k	331	7.1%	7.0%
\$60k-\$74k	343	7.3%	6.5%
\$75k-\$99k	264	5.7%	4.9%
\$100k-\$124k	52	1.1%	1.7%
\$125k-\$149k	41	0.9%	0.6%
\$150k-\$199k	23	0.5%	0.4%
Over \$200k	64	1.4%	0.7%
<b>Total</b>	<b>4667</b>	<b>100.0%</b>	<b>100.0%</b>



	SPA	City
Median Household Income	\$28,356	\$25,928
Median Family Income	\$34,841	\$30,286
Persons in Poverty	1497	122479

## HOUSING VALUES - 2000

	Houses	% SPA	% CITY
Under \$20k	0	0.0%	2.00%
\$20k- \$29k	24	2.9%	3.20%
\$30k-\$39k	14	1.7%	5.60%
\$40k-\$49k	69	8.3%	8.90%
\$50k-\$59k	53	6.4%	11.10%
\$60k-\$79k	176	21.1%	31.40%
\$80k-\$99k	91	10.9%	22.40%
\$100k-\$150k	169	20.3%	12.10%
\$150k-\$200k	56	6.7%	2.00%
\$200k-\$250k	19	2.3%	0.70%
Over \$250k	162	19.4%	0.70%
<b>TOTAL</b>	<b>833</b>	<b>100.0%</b>	<b>100.00%</b>



	SPA	CITY
Median Housing Value	\$87,130	\$71,100
Median Contract Rent	\$410	\$379

## HOUSING TYPE

Structure Type	Units	%SPA	%CITY
Single-Family	1197	23.5%	52.8%
Attached	246		
Detached	951		
Multi-Family	3899	76.5%	46.7%
2 Units	719		
3 or More	3180		
Other	0	0.0%	0.5%
<b>Total</b>	<b>5096</b>		

## OCCUPATIONS

	Number	%SPA	%CITY
Management	1721	37.1%	22.5%
Service	795	17.2%	20.9%
Sales	1215	26.2%	26.7%
Farm	5	0.1%	0.1%
Construction	258	5.6%	7.5%
Production	640	13.8%	22.3%
<b>Total</b>	<b>4634</b>	<b>100.0%</b>	<b>100.0%</b>

